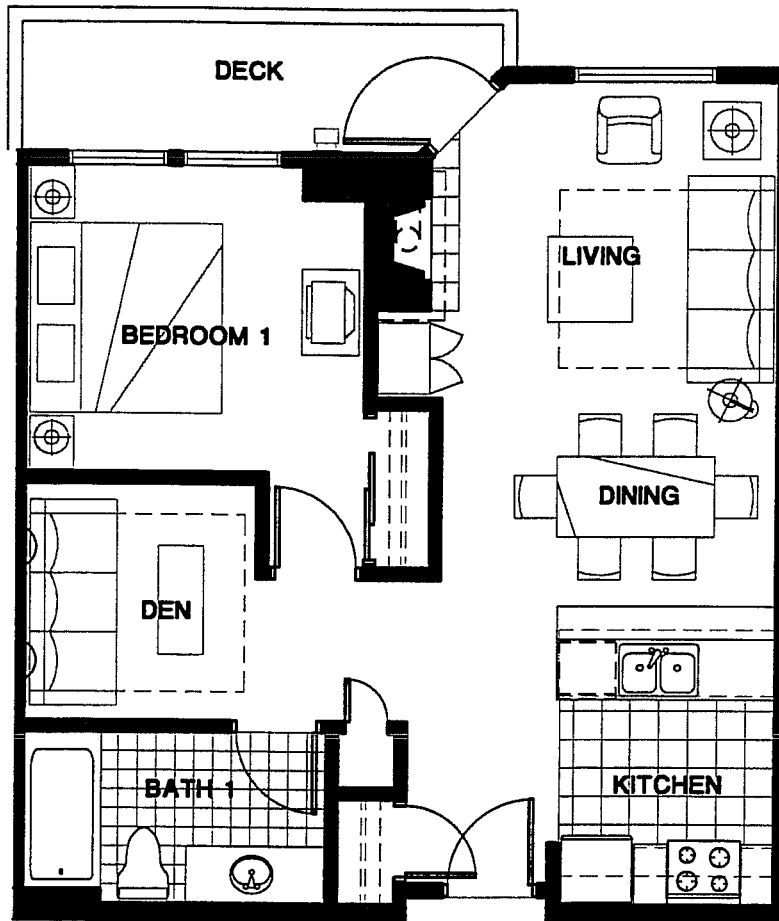




# POWDERHORN LODGE

Unit: A  
Square Feet: 759

Date: March 5, 1999



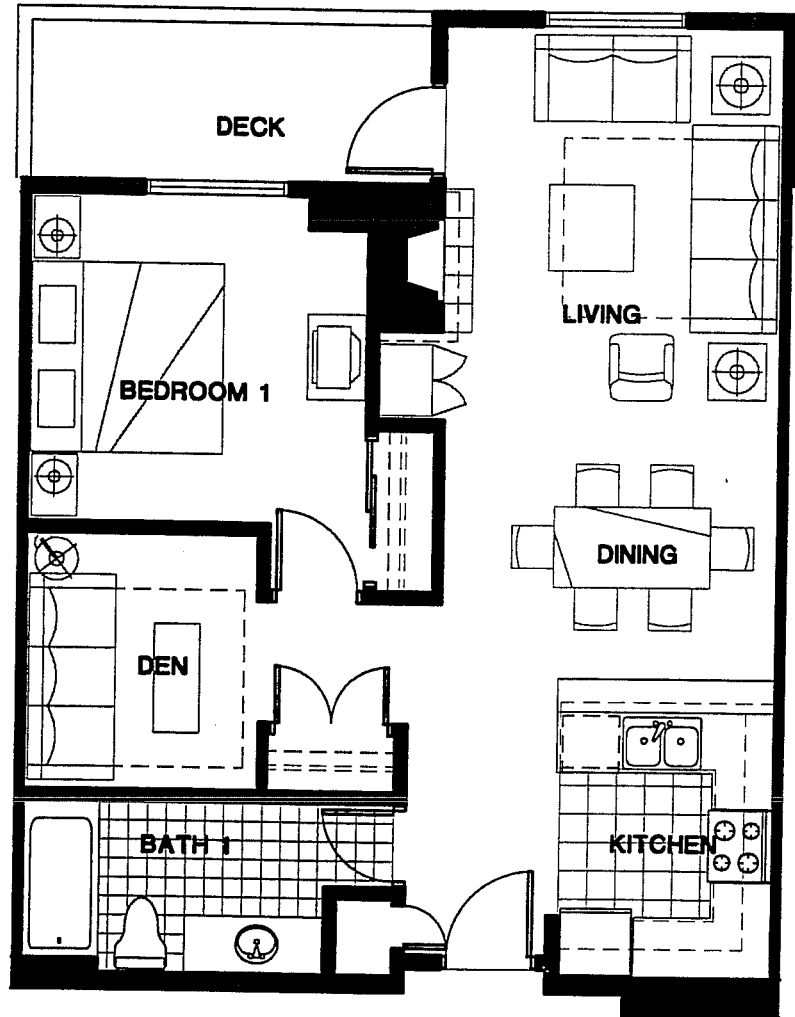
The Developer reserves the right to make any modifications that the Developer deems necessary. All dimensions and areas shown on these plans are approximate. "As Build" dimensions may vary from those shown. The linear dimensions shown indicate distances from interior wall to interior wall. The areas shown are based on standard architectural calculations which may vary from the method of surveyed calculations.



# POWDERHORN LODGE

Unit: A1  
Square Feet: 785

Date: March 5, 1999



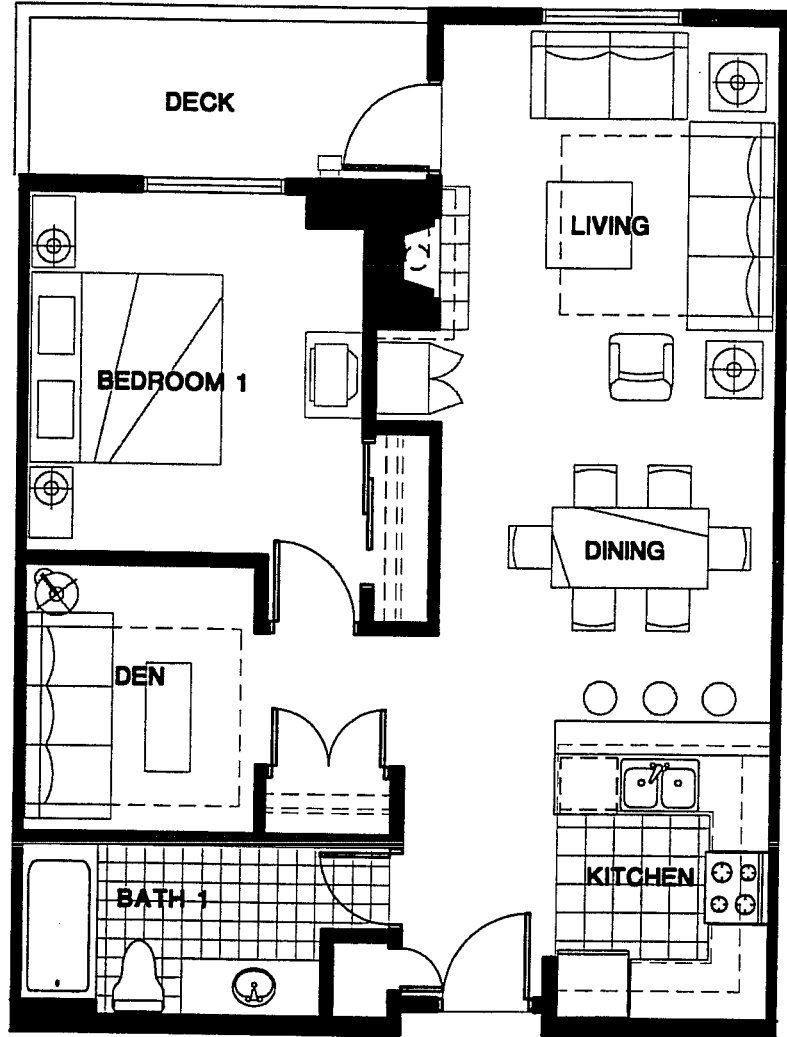
The Developer reserves the right to make any modifications that the Developer deems necessary. All dimensions and areas shown on these plans are approximate. "As Build" dimensions may vary from those shown. The linear dimensions shown indicate distances from interior wall to interior wall. The areas shown are based on standard architectural calculations which may vary from the method of surveyed calculations.



# POWDERHORN LODGE

Unit: A2  
Square Feet: 882

Date: March 5, 1999



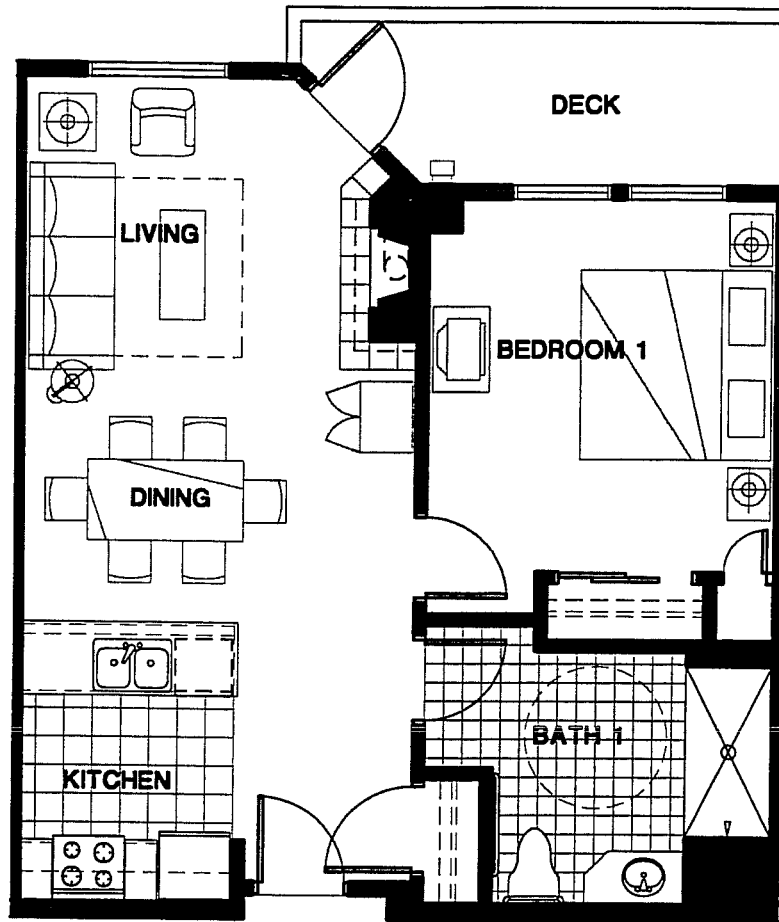
The Developer reserves the right to make any modifications that the Developer deems necessary. All dimensions and areas shown on these plans are approximate. "As Build" dimensions may vary from those shown. The linear dimensions shown indicate distances from interior wall to interior wall. The areas shown are based on standard architectural calculations which may vary from the method of surveyed calculations.



# POWDERHORN LODGE

Unit: A3  
Square Feet: 743

Date: March 5, 1999



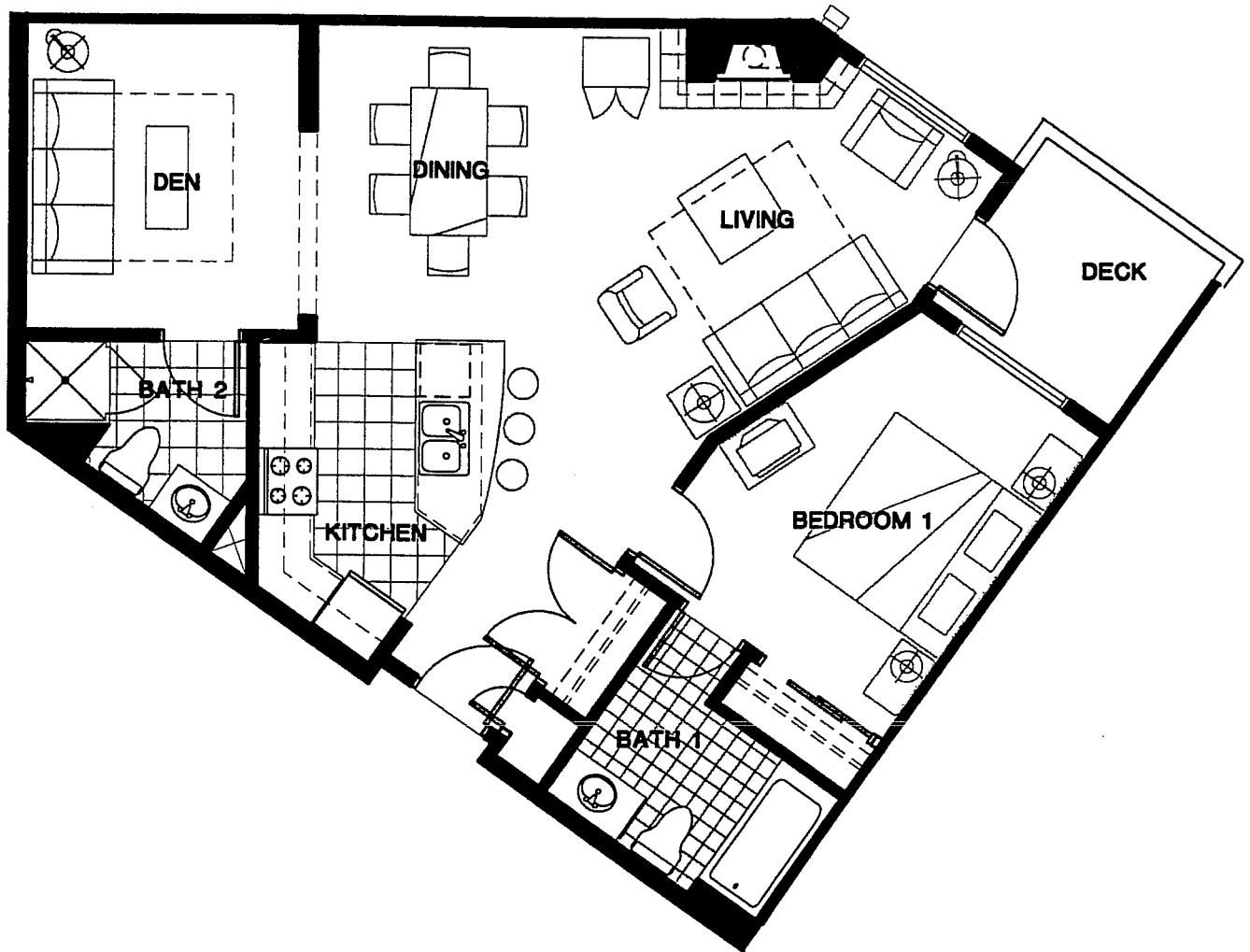
The Developer reserves the right to make any modifications that the Developer deems necessary. All dimensions and areas shown on these plans are approximate. "As Build" dimensions may vary from those shown. The linear dimensions shown indicate distances from interior wall to interior wall. The areas shown are based on standard architectural calculations which may vary from the method of surveyed calculations.



# POWDERHORN LODGE

Unit: A4  
Square Feet: 960

Date: March 5, 1999



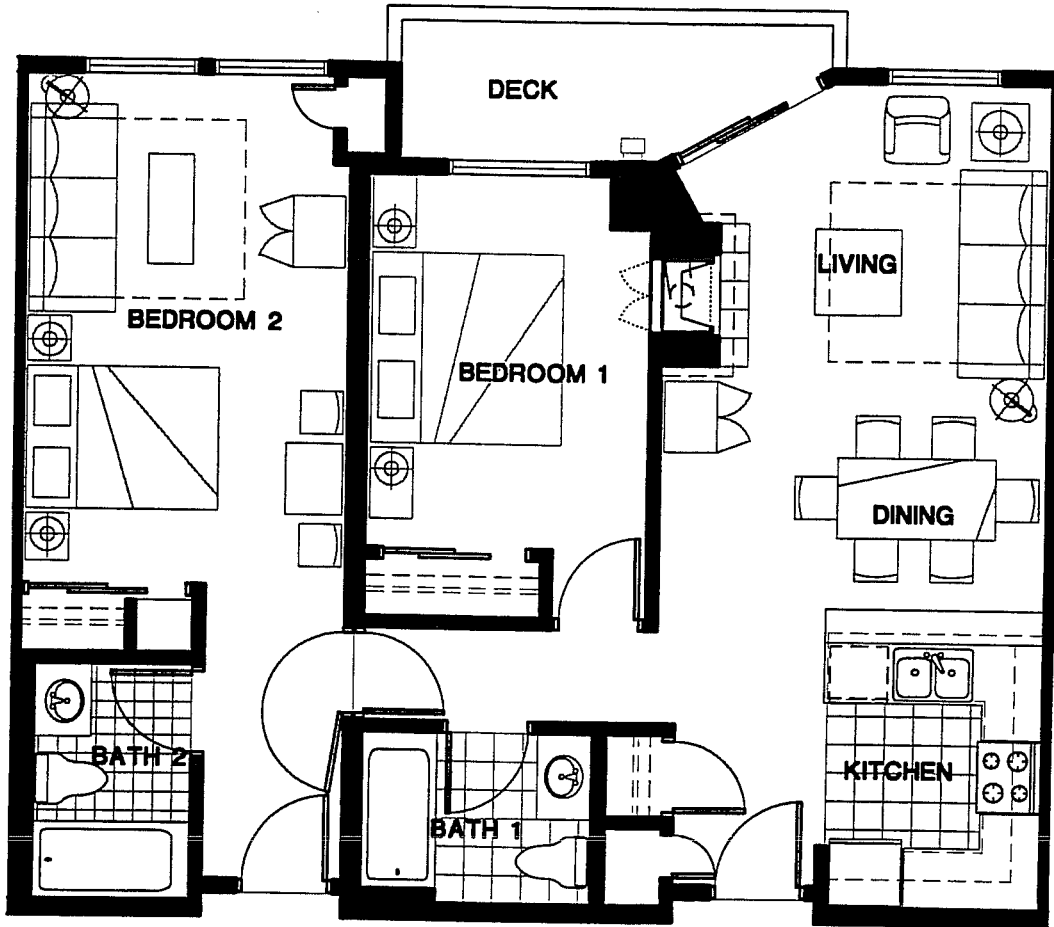
The Developer reserves the right to make any modifications that the Developer deems necessary. All dimensions and areas shown on these plans are approximate. "As Build" dimensions may vary from those shown. The linear dimensions shown indicate distances from interior wall to interior wall. The areas shown are based on standard architectural calculations which may vary from the method of surveyed calculations.



# POWDERHORN LODGE

Unit: B  
Square Feet: 1,045

Date: March 5, 1999



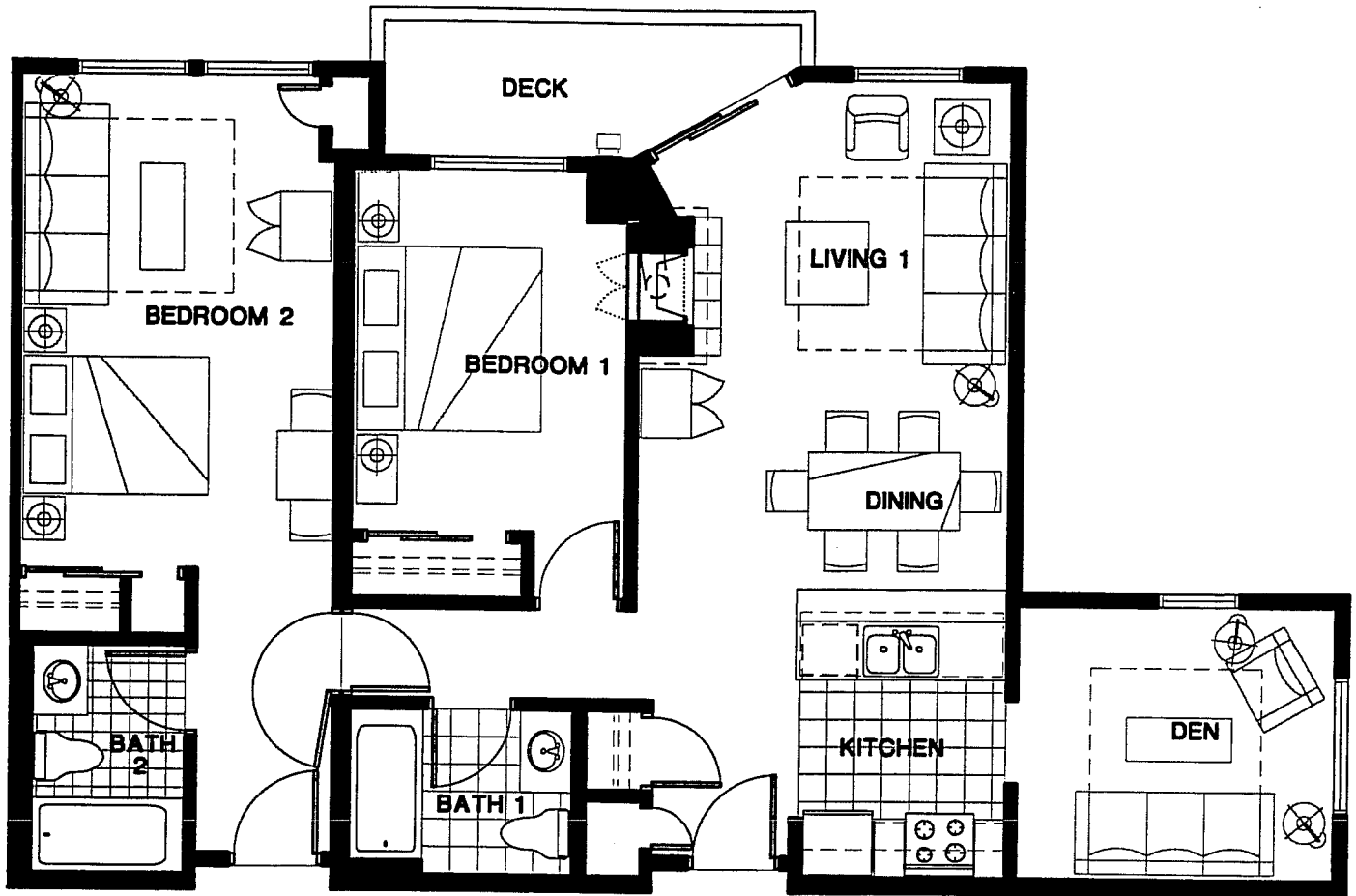
The Developer reserves the right to make any modifications that the Developer deems necessary. All dimensions and areas shown on these plans are approximate. "As Build" dimensions may vary from those shown. The linear dimensions shown indicate distances from interior wall to interior wall. The areas shown are based on standard architectural calculations which may vary from the method of surveyed calculations.



# POWDERHORN LODGE

Unit: B1  
Square Feet: 1,179

Date: March 5, 1999



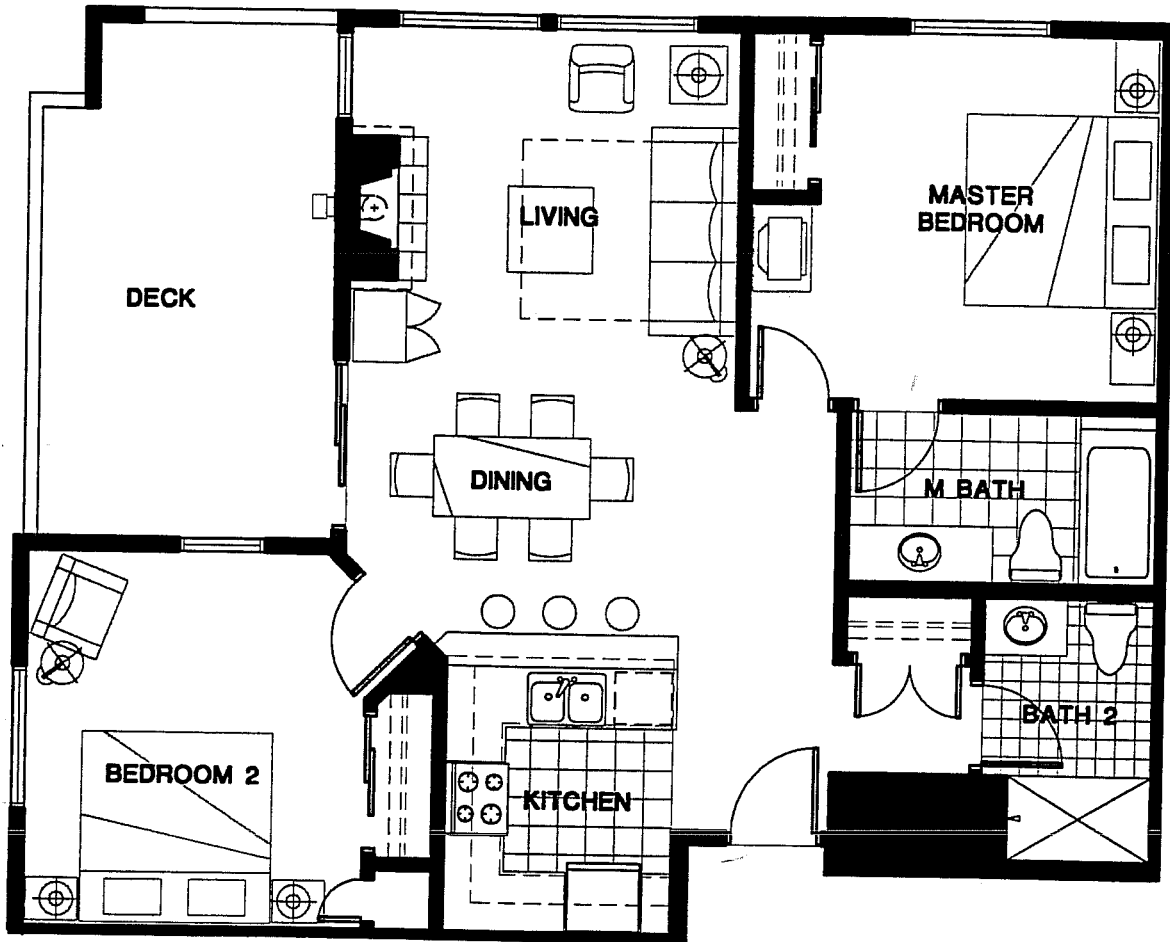
The Developer reserves the right to make any modifications that the Developer deems necessary. All dimensions and areas shown on these plans are approximate. "As Build" dimensions may vary from those shown. The linear dimensions shown indicate distances from interior wall to interior wall. The areas shown are based on standard architectural calculations which may vary from the method of surveyed calculations.



# POWDERHORN LODGE

Unit: B2  
Square Feet: 1,058

Date: March 5, 1999



The Developer reserves the right to make any modifications that the Developer deems necessary. All dimensions and areas shown on these plans are approximate. "As Build" dimensions may vary from those shown. The linear dimensions shown indicate distances from interior wall to interior wall. The areas shown are based on standard architectural calculations which may vary from the method of surveyed calculations.

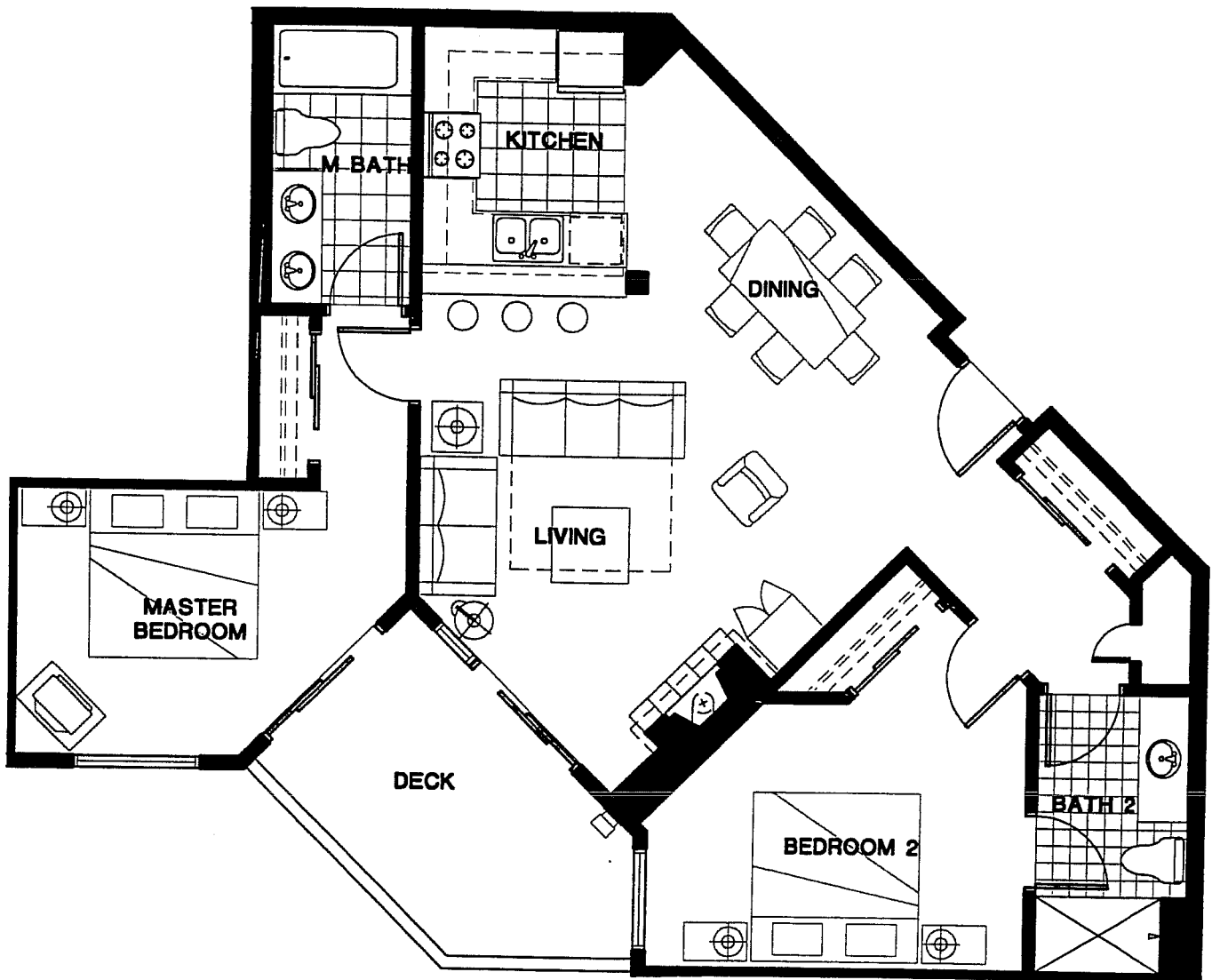




# POWDERHORN LODGE

Unit: B5  
Square Feet: 1,152

Date: March 5, 1999



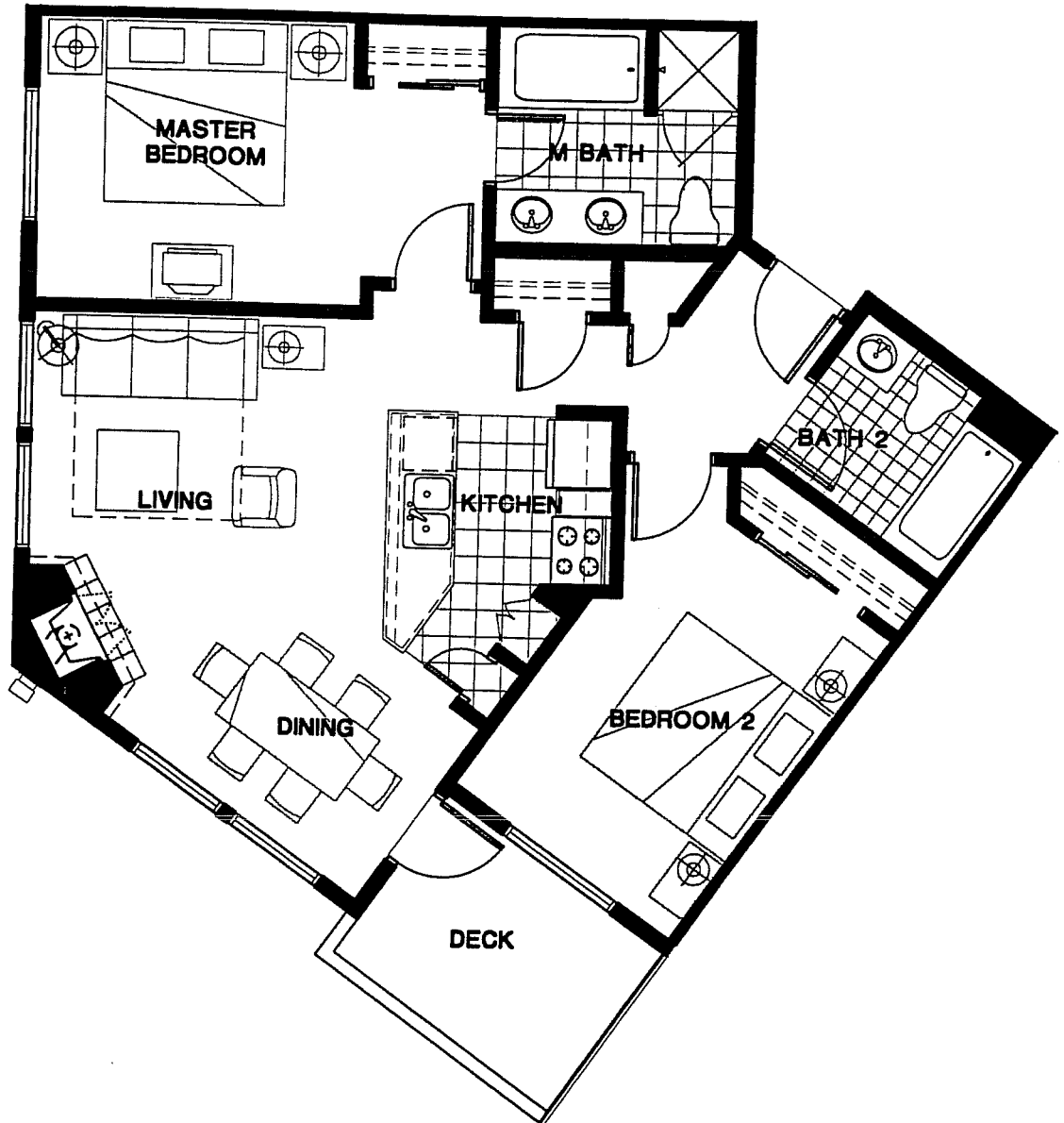
The Developer reserves the right to make any modifications that the Developer deems necessary. All dimensions and areas shown on these plans are approximate. "As Build" dimensions may vary from those shown. The linear dimensions shown indicate distances from interior wall to interior wall. The areas shown are based on standard architectural calculations which may vary from the method of surveyed calculations.



# POWDERHORN LODGE

Unit: B6  
Square Feet: 962

Date: March 5, 1999



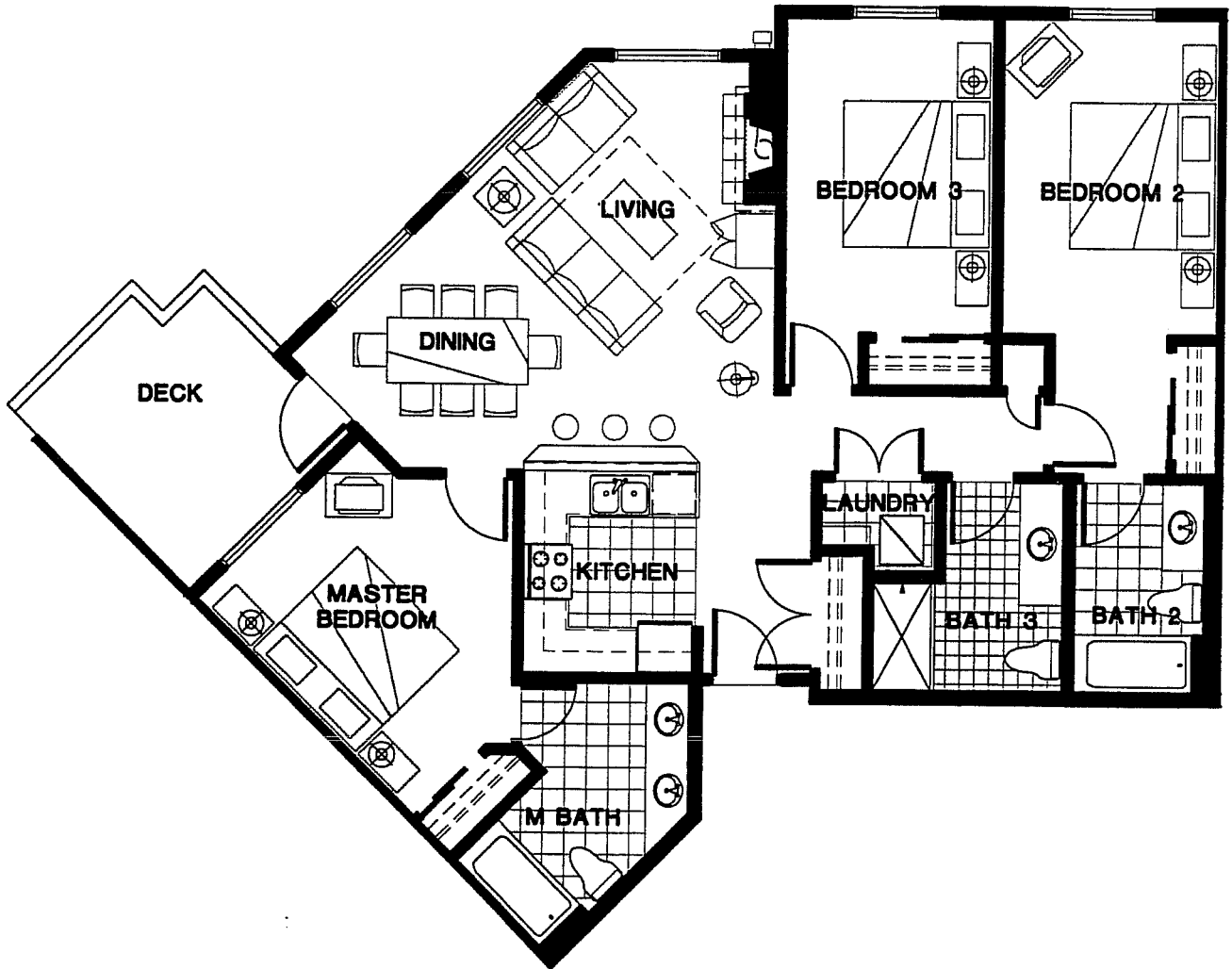
The Developer reserves the right to make any modifications that the Developer deems necessary. All dimensions and areas shown on these plans are approximate. "As Build" dimensions may vary from those shown. The linear dimensions shown indicate distances from interior wall to interior wall. The areas shown are based on standard architectural calculations which may vary from the method of surveyed calculations.



# POWDERHORN LODGE

Unit: C  
Square Feet: 1,384

Date: March 5, 1999



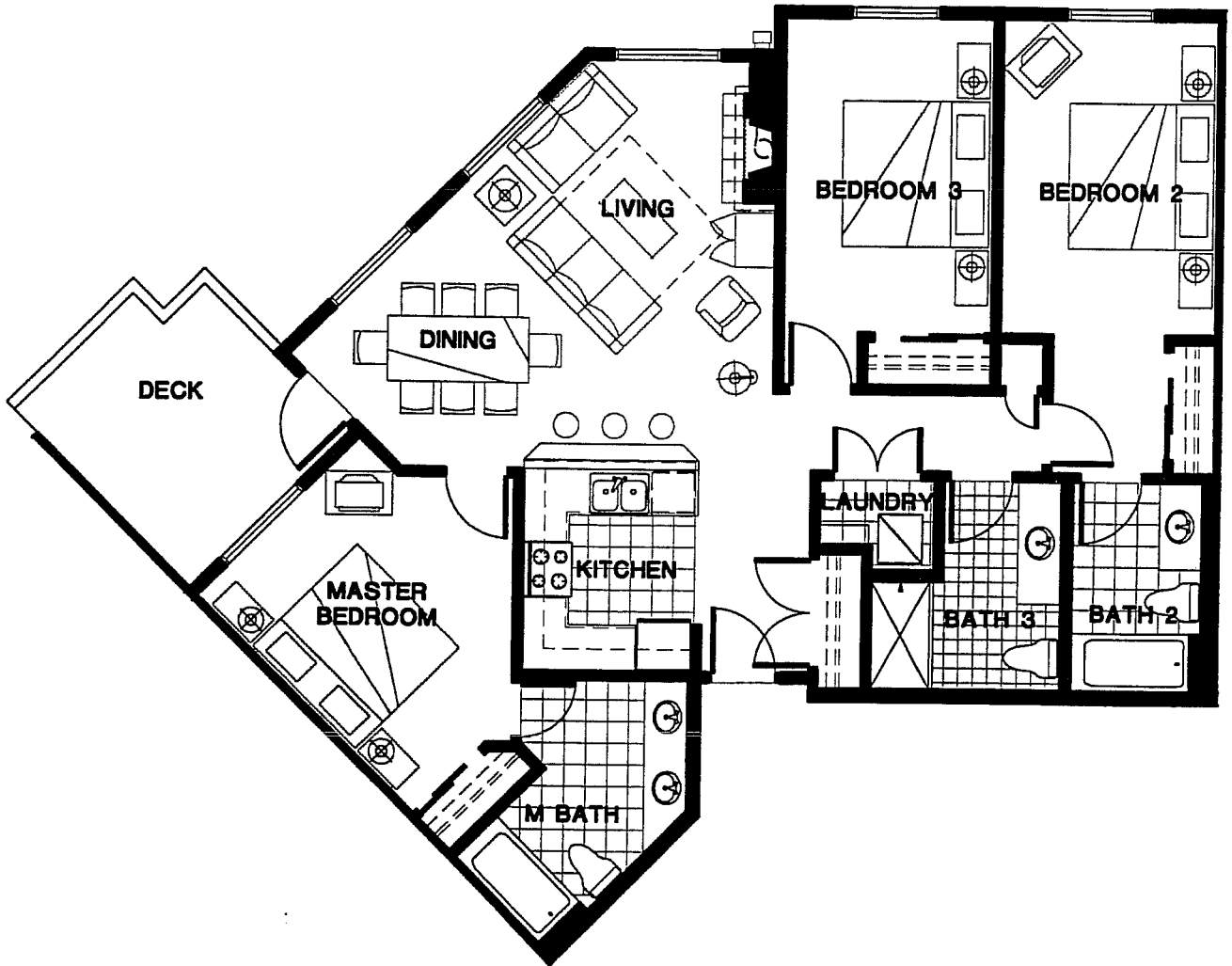
The Developer reserves the right to make any modifications that the Developer deems necessary. All dimensions and areas shown on these plans are approximate. "As Build" dimensions may vary from those shown. The linear dimensions shown indicate distances from interior wall to interior wall. The areas shown are based on standard architectural calculations which may vary from the method of surveyed calculations.



# POWDERHORN LODGE

Unit: C  
Square Feet: 1,384

Date: March 5, 1999



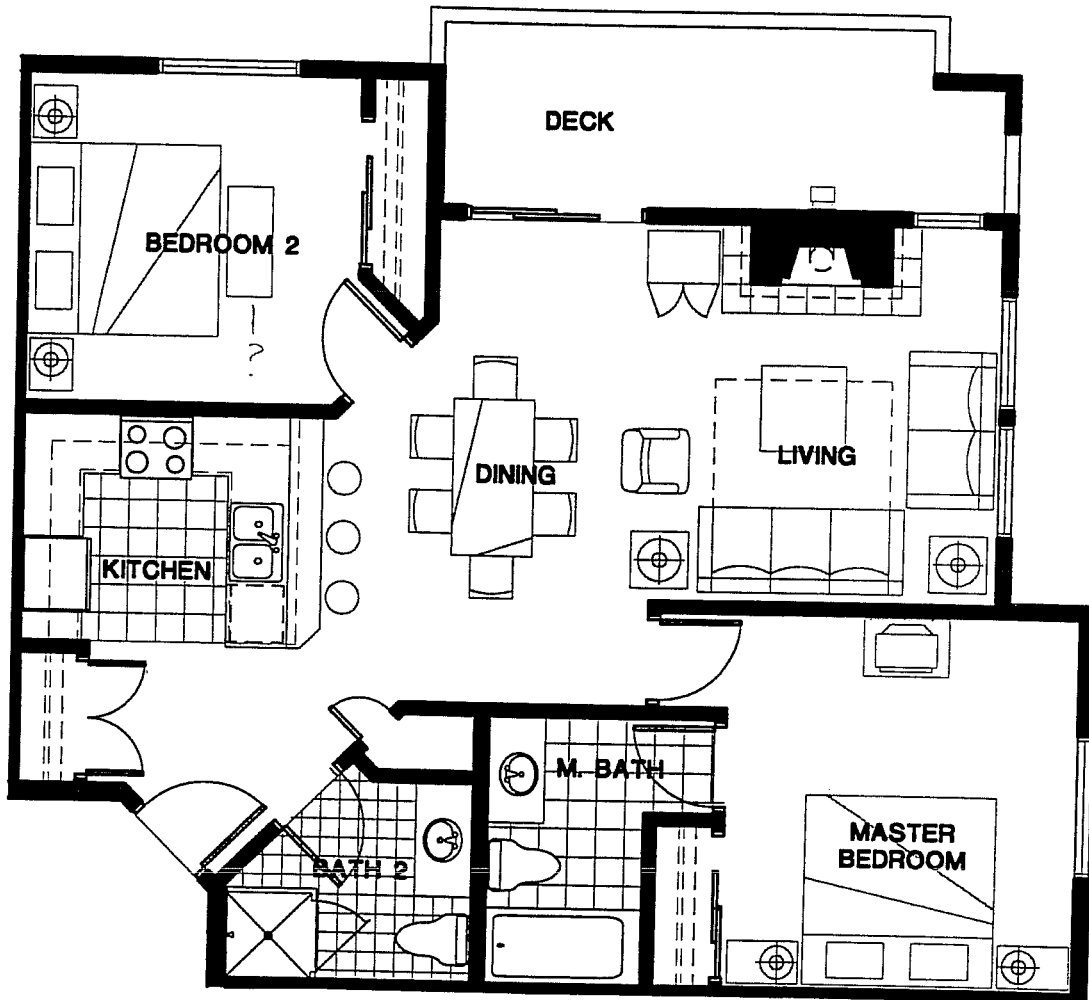
The Developer reserves the right to make any modifications that the Developer deems necessary. All dimensions and areas shown on these plans are approximate. "As Build" dimensions may vary from those shown. The linear dimensions shown indicate distances from interior wall to interior wall. The areas shown are based on standard architectural calculations which may vary from the method of surveyed calculations.



# POWDERHORN LODGE

Unit: B3  
Square Feet: 1,040

Date: March 5, 1999



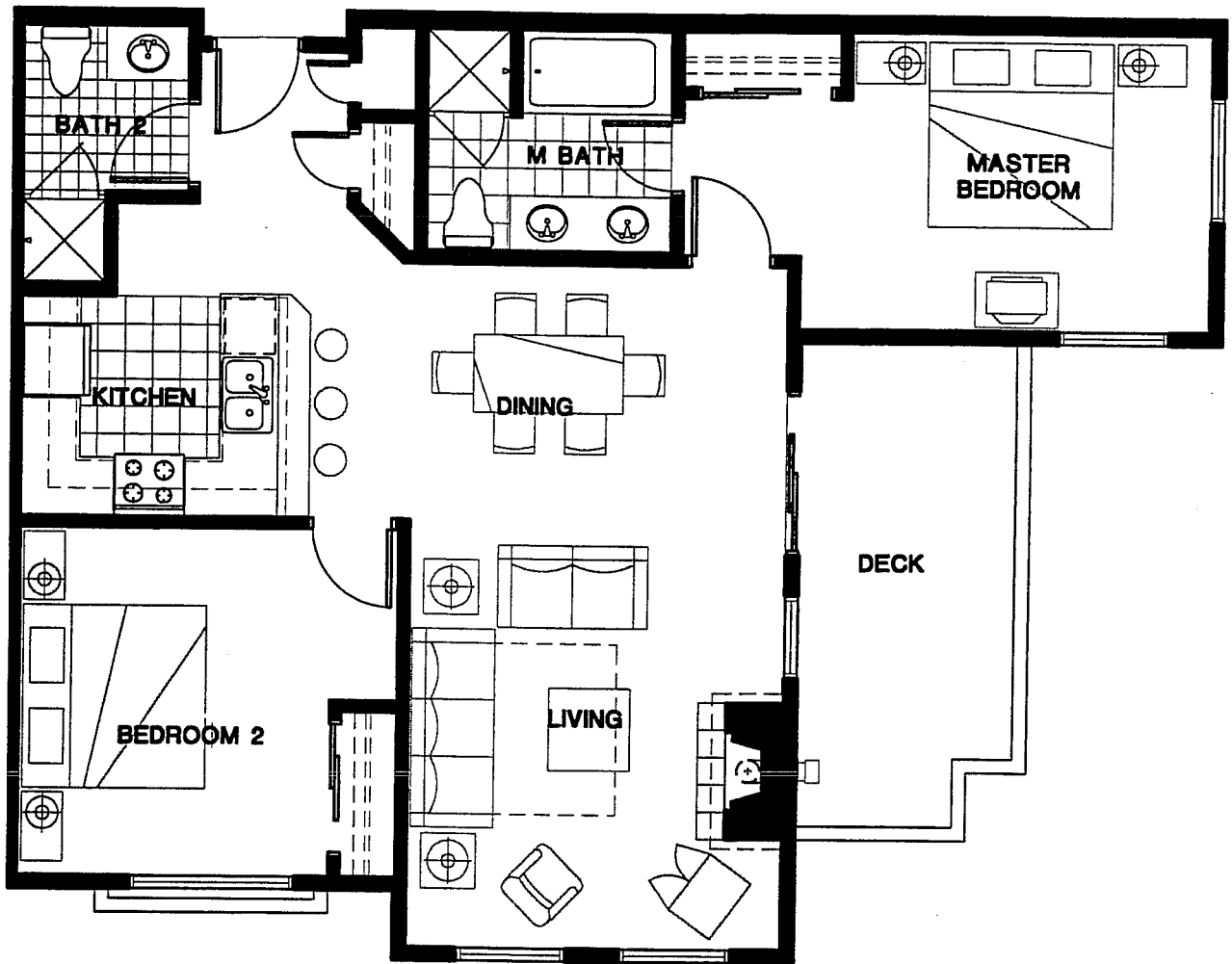
The Developer reserves the right to make any modifications that the Developer deems necessary. All dimensions and areas shown on these plans are approximate. "As Build" dimensions may vary from those shown. The linear dimensions shown indicate distances from interior wall to interior wall. The areas shown are based on standard architectural calculations which may vary from the method of surveyed calculations.



# POWDERHORN LODGE

Unit: B4  
Square Feet: 1,130

Date: March 5, 1999



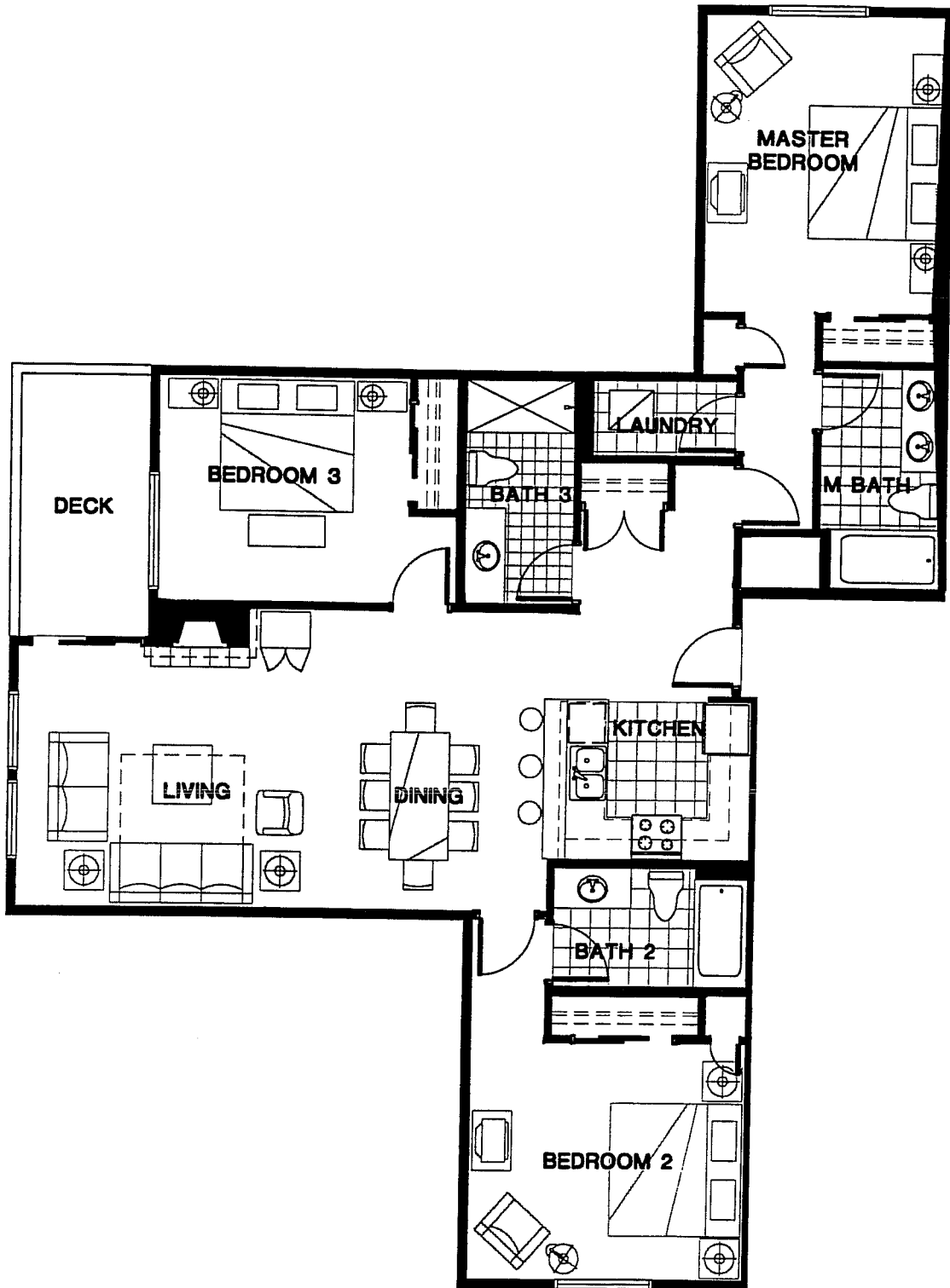
The Developer reserves the right to make any modifications that the Developer deems necessary. All dimensions and areas shown on these plans are approximate. "As Build" dimensions may vary from those shown. The linear dimensions shown indicate distances from interior wall to interior wall. The areas shown are based on standard architectural calculations which may vary from the method of surveyed calculations.



# POWDERHORN LODGE

Unit: C1  
Square Feet: 1,581

Date: March 5, 1999



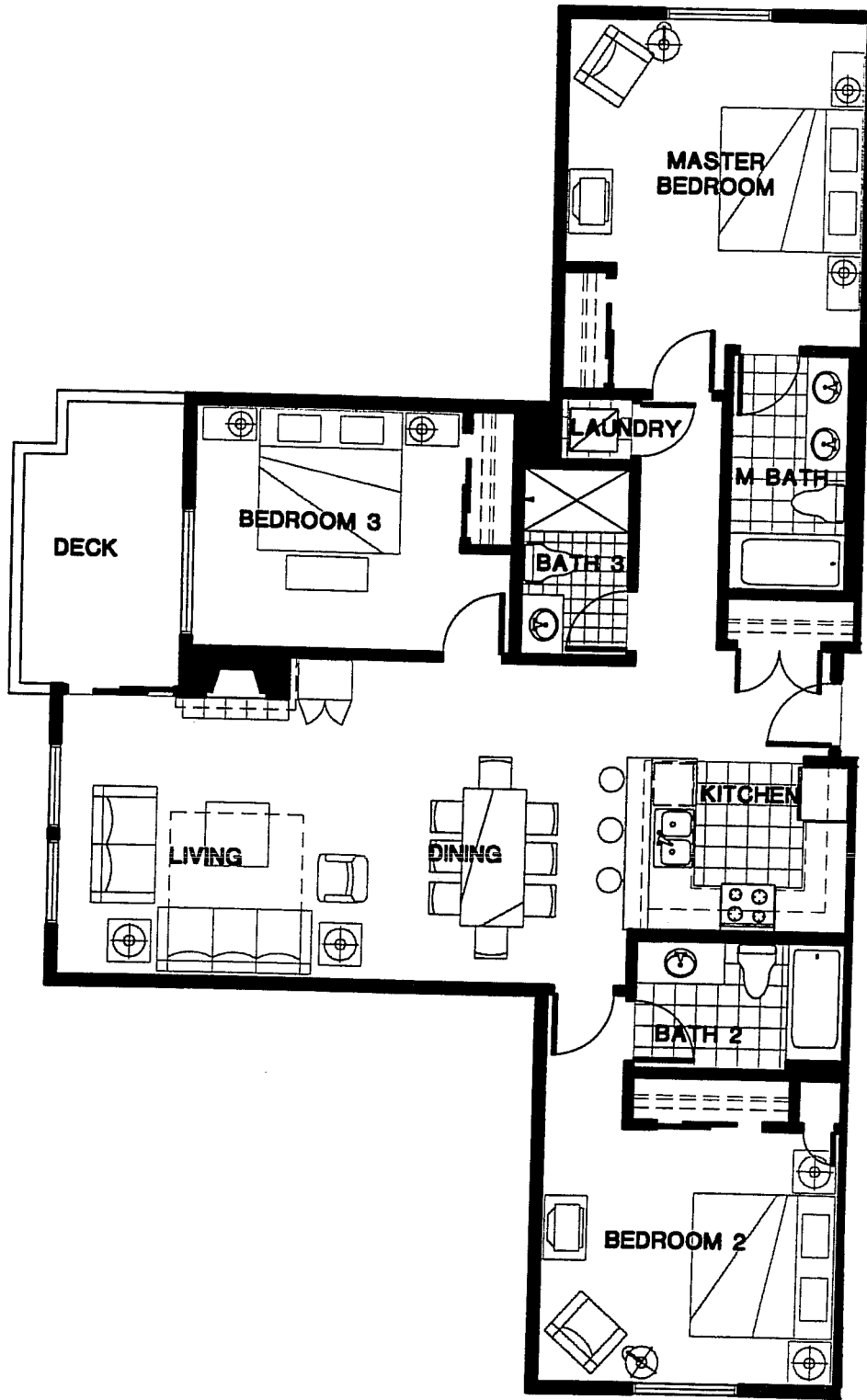
The Developer reserves the right to make any modifications that the Developer deems necessary. All dimensions and areas shown on these plans are approximate. "As Build" dimensions may vary from those shown. The linear dimensions shown indicate distances from interior wall to interior wall. The areas shown are based on standard architectural calculations which may vary from the method of surveyed calculations.



# POWDERHORN LODGE

Unit: C2  
Square Feet: 1,525

Date: March 5, 1999



The Developer reserves the right to make any modifications that the Developer deems necessary. All dimensions and areas shown on these plans are approximate. "As Build" dimensions may vary from those shown. The linear dimensions shown indicate distances from interior wall to interior wall. The areas shown are based on standard architectural calculations which may vary from the method of surveyed calculations.