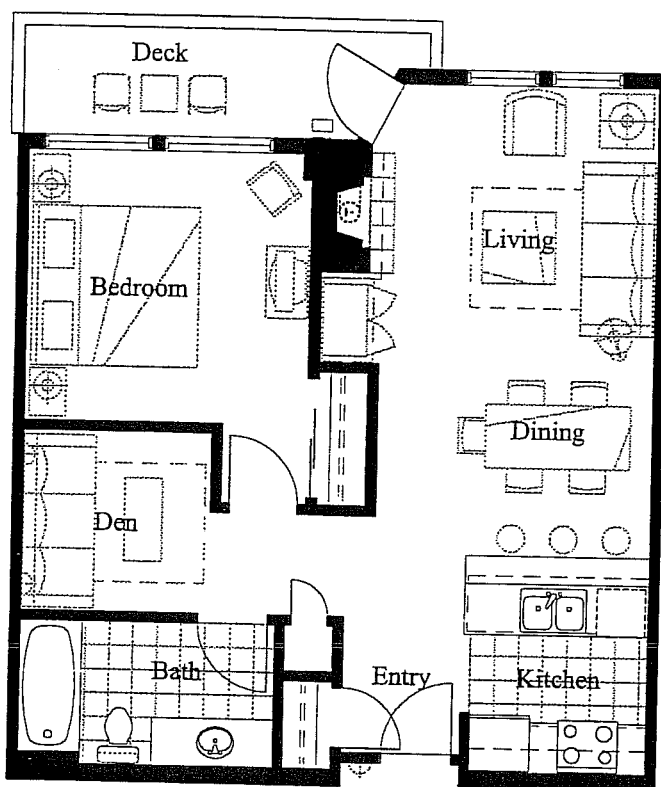


EAGLE SPRINGS

Unit: Unit D
 Square Feet: 759

Date: December 23, 1999



ROOM DIMENSIONS

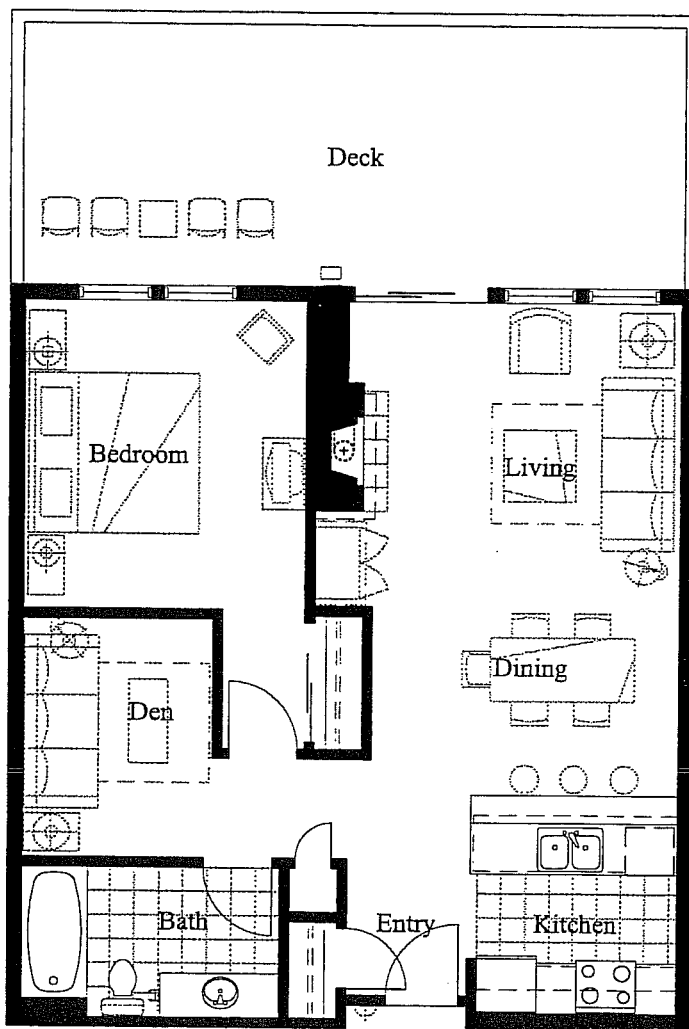
Entry:	9'-11" x 5'-0"
Bath:	10'-7" x 6'-0"
Den:	7'-10" x 7'-7"
Bedroom:	11'-9" x 11'-4"
Deck:	16'-10" x 4'-6"
Living:	11'-6" x 11'-8"
Dining:	11'-6" x 8'-9"
Kitchen:	7'-5" x 7'-11"

The Developer reserves the right to make any modifications that the Developer deems necessary. All dimensions and areas shown on these plans are approximate. "As Build" dimensions may vary from those shown. The linear dimensions shown indicate distances from interior wall to interior wall. The areas shown are based on standard architectural calculations which may vary from the method of surveyed calculations.

EAGLE SPRINGS

Unit: Unit D1
 Square Feet: 863

Date: December 23, 1999



ROOM DIMENSIONS

Entry:	- 5'-0" x 8'-4"
Bath:	- 10'-7" x 6'-3"
Den:	- 7'-9" x 10'-0"
Bedroom:	- 11'-7" x 12'-11"
Deck:	- 27'-4" x 10'-10"
Living:	- 12'-9" x 12'-9"
Dining:	- 12'-9" x 8'-8"
Kitchen:	- 8'-4" x 8'-4"

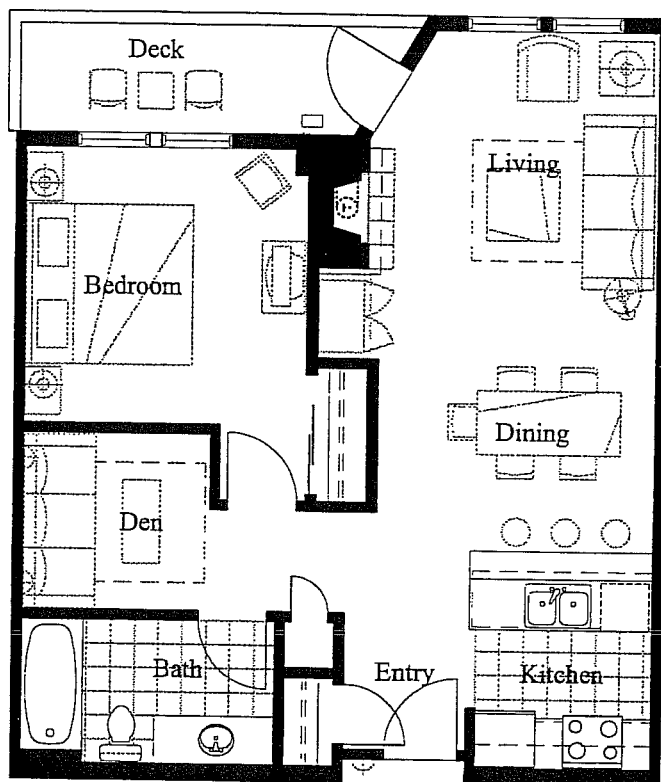
The Developer reserves the right to make any modifications that the Developer deems necessary. All dimensions and areas shown on these plans are approximate. "As Build" dimensions may vary from those shown. The linear dimensions shown indicate distances from interior wall to interior wall. The areas shown are based on standard architectural calculations which may vary from the method of surveyed calculations.



EAGLE SPRINGS

Unit: Unit D2 (4th Floor, West Bldg. only)
Square Feet: 783

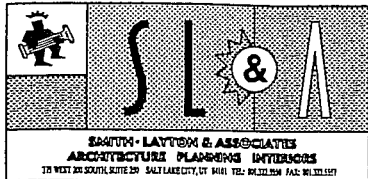
Date: December 23, 1999



ROOM DIMENSIONS

Entry:	5'-0" x 7'-6"
Bath:	10'-7" x 6'-0"
Den:	7'-10" x 7'-5"
Bedroom:	11'-10" x 11'-6"
Deck:	16'-10" x 4'-6"
Living:	11'-6" x 13'-9"
Dining:	11'-6" x 8'-9"
Kitchen:	7'-4" x 8'-3"

The Developer reserves the right to make any modifications that the Developer deems necessary. All dimensions and areas shown on these plans are approximate. "As Build" dimensions may vary from those shown. The linear dimensions shown indicate distances from interior wall to interior wall. The areas shown are based on standard architectural calculations which may vary from the method of surveyed calculations.

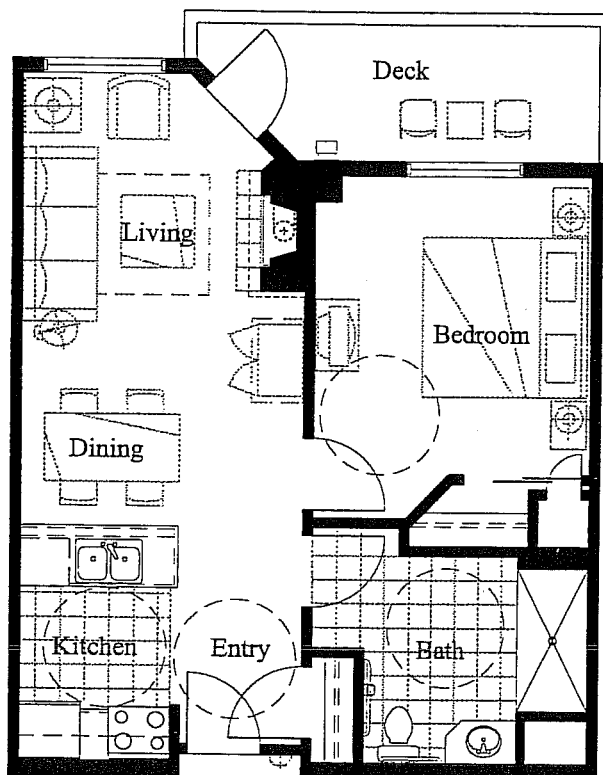


EAGLE SPRINGS

Unit: Unit D3
Square Feet: 668

107
+ 109

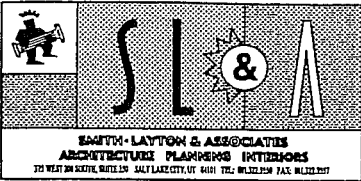
Date: December 23, 1999



ROOM DIMENSIONS

Entry:	5'-0" x 9'-0"
Bath:	8'-8" x 9'-10"
Bedroom:	11'-8" x 14'-3"
Deck:	16'-10" x 5'-8"
Living:	11'-7" x 11'-10"
Dining:	11'-7" x 7'-0"
Kitchen:	6'-2" x 9'-4"

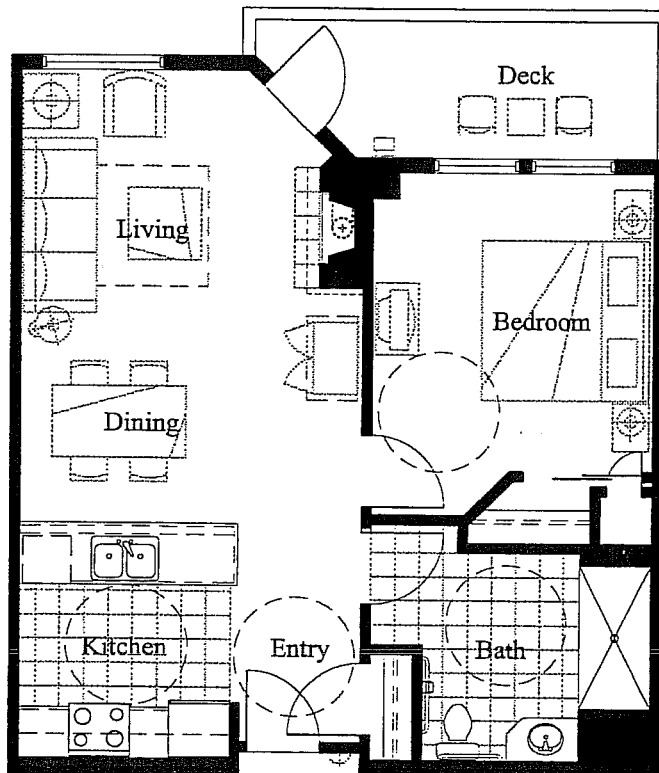
The Developer reserves the right to make any modifications that the Developer deems necessary. All dimensions and areas shown on these plans are approximate. "As Build" dimensions may vary from those shown. The linear dimensions shown indicate distances from interior wall to interior wall. The areas shown are based on standard architectural calculations which may vary from the method of surveyed calculations.



EAGLE SPRINGS

Unit: Unit D4
Square Feet: 743

Date: December 23, 1999



ROOM DIMENSIONS

Entry:	5'-0" x 9'-0"
Bath:	6'-6" x 8'-8"
Bedroom:	11'-9" x 14'-3"
Deck:	16'-8" x 5'-8"
Living:	14'-0" x 11'-10"
Dining:	14'-0" x 7'-5"
Kitchen:	8'-7" x 9'-10"

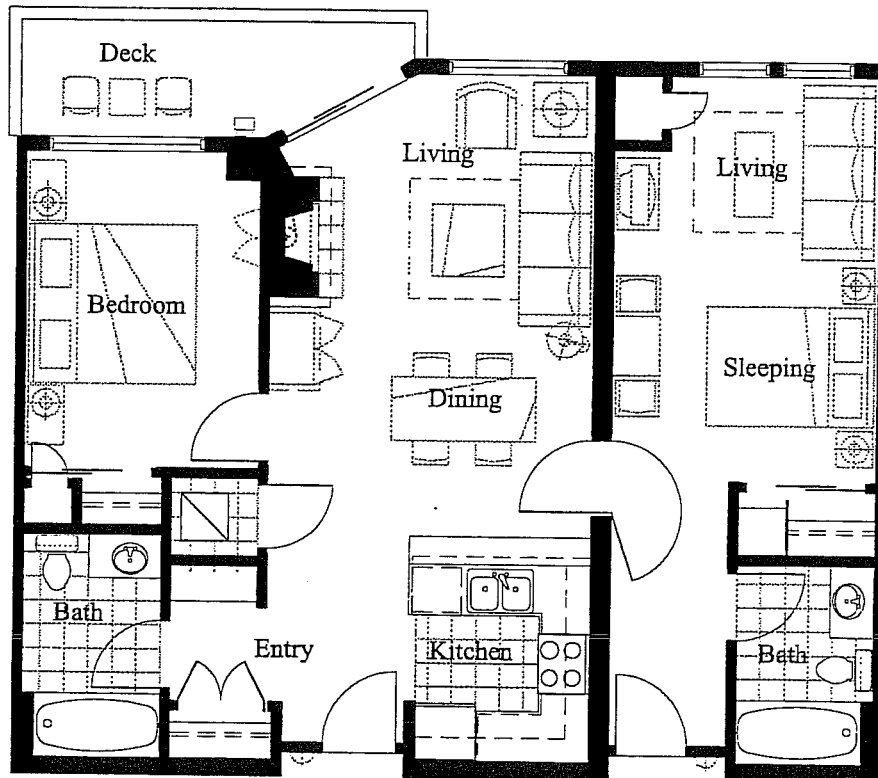
The Developer reserves the right to make any modifications that the Developer deems necessary. All dimensions and areas shown on these plans are approximate. "As Build" dimensions may vary from those shown. The linear dimensions shown indicate distances from interior wall to interior wall. The areas shown are based on standard architectural calculations which may vary from the method of surveyed calculations.



EAGLE SPRINGS

Unit: Unit E
Square Feet: 1,040

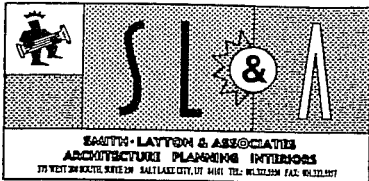
Date: December 23, 1999



ROOM DIMENSIONS

Entry:	5'-0" x 6'-3"
Bath:	9'-4" x 5'-3"
Bedroom:	9'-10" x 13'-2"
Deck:	4'-10" x 16'-0"
Living:	13'-5" x 11'-6"
Dining:	13'-5" x 7'-0"
Kitchen:	10'-2" x 7'-5"
Living:	11'-2" x 7'-5"
Sleeping:	11'-2" x 9'-6"
Bath:	8'-4" x 5'-3"

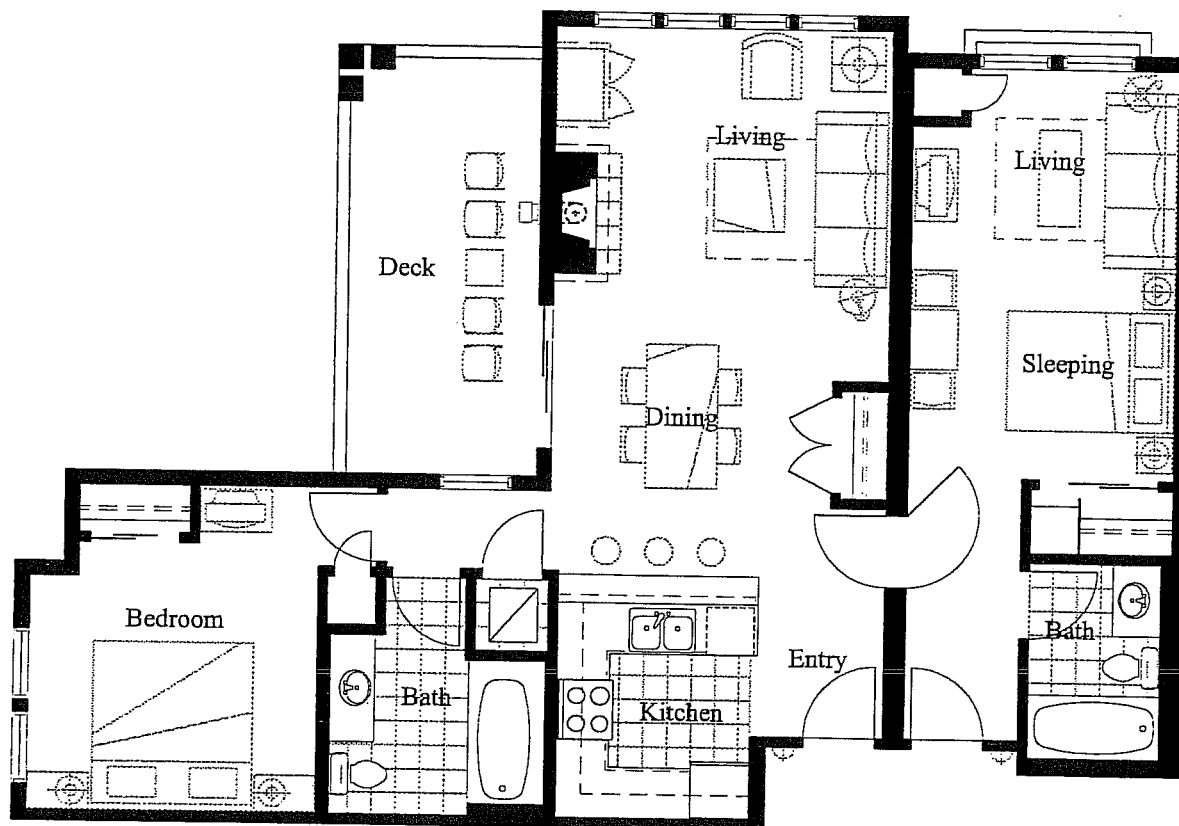
The Developer reserves the right to make any modifications that the Developer deems necessary. All dimensions and areas shown on these plans are approximate. "As Build" dimensions may vary from those shown. The linear dimensions shown indicate distances from interior wall to interior wall. The areas shown are based on standard architectural calculations which may vary from the method of surveyed calculations.



EAGLE SPRINGS

Unit: Unit E1
Square Feet: 1,155

Date: December 23, 1999



ROOM DIMENSIONS

Entry:	6'-8" x 5'-6"
Bath:	8'-11" x 9'-11"
Bedroom:	12'-0" x 13'-6"
Deck:	8'-5" x 17'-10"
Living:	14'-0" x 11'-5"
Dining:	8'-6" x 12'-7"
Kitchen:	8'-0" x 10'-2"
Living:	11'-2" x 7'-6"
Sleeping	11'-2" x 9'-6"
Bath	5'-6" x 8'-2"

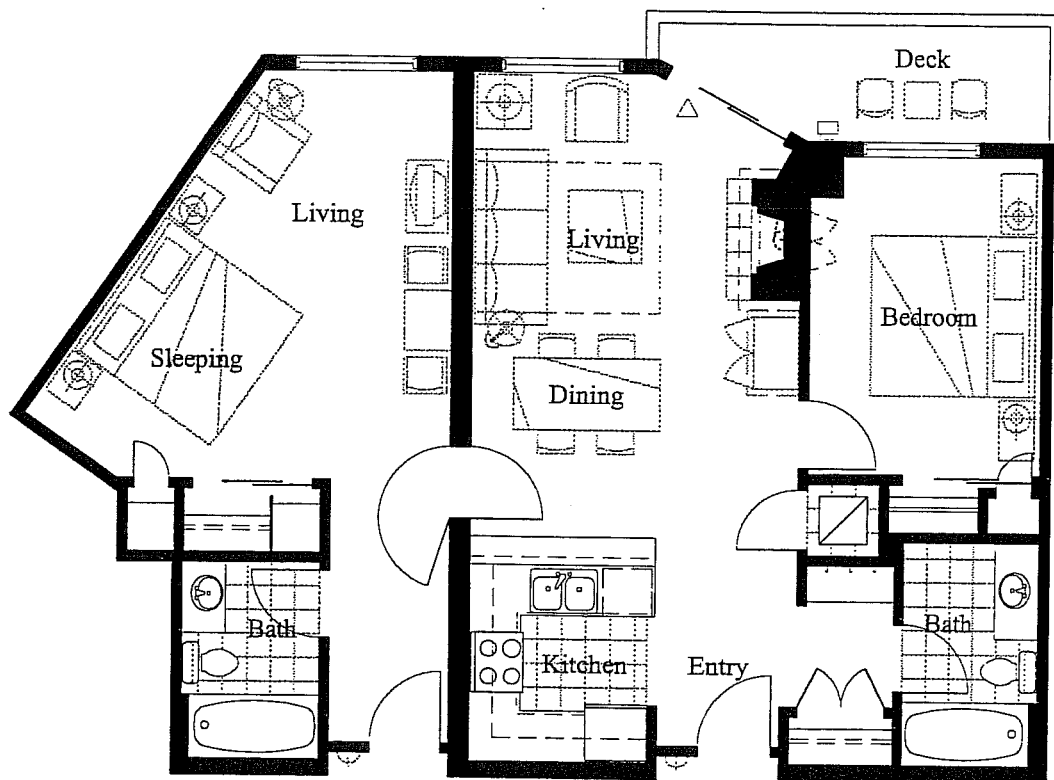
The Developer reserves the right to make any modifications that the Developer deems necessary. All dimensions and areas shown on these plans are approximate. "As Build" dimensions may vary from those shown. The linear dimensions shown indicate distances from interior wall to interior wall. The areas shown are based on standard architectural calculations which may vary from the method of surveyed calculations.



EAGLE SPRINGS

Unit: Unit E2
 Square Feet: 1,086

Date: December 23, 1999



ROOM DIMENSIONS

Entry	5'-8" x 10'-7"
Kitchen	7'-5" x 10'-2"
Bath	3'-5" x 9'-5"
Sleeping	11'-0" x 14'-0"
Living	6'-5" x 7'-0"
Living	10'-9" x 13'-5"
Dining	6'-7" x 13'-5"
Deck	16'-6" x 14'-10"
Bedroom	9'-6" x 13'-2"
Bath	5'-5" x 9'-4"

The Developer reserves the right to make any modifications that the Developer deems necessary. All dimensions and areas shown on these plans are approximate. "As Build" dimensions may vary from those shown. The linear dimensions shown indicate distances from interior wall to interior wall. The areas shown are based on standard architectural calculations which may vary from the method of surveyed calculations.



EAGLE SPRINGS

Unit: Unit E3
Square Feet: 1,205

Date: December 23, 1999



ROOM DIMENSIONS

Entry	5'-0" x 9'-0"
Bath	5'-6" x 10'-0"
Bedroom	10'-10" x 13'-10"
Deck	7'-6" x 14'-5"
Living	10'-5" x 15'-2"
Dining	7'-0" x 10'-0"
Living	11'-2" x 6'-8"
Sleeping	11'-2" x 10'-5"
Bath	5'-3" x 8'-2"
Den	8'-6" x 9'-1"
Kitchen	8'-1" x 9'-6"

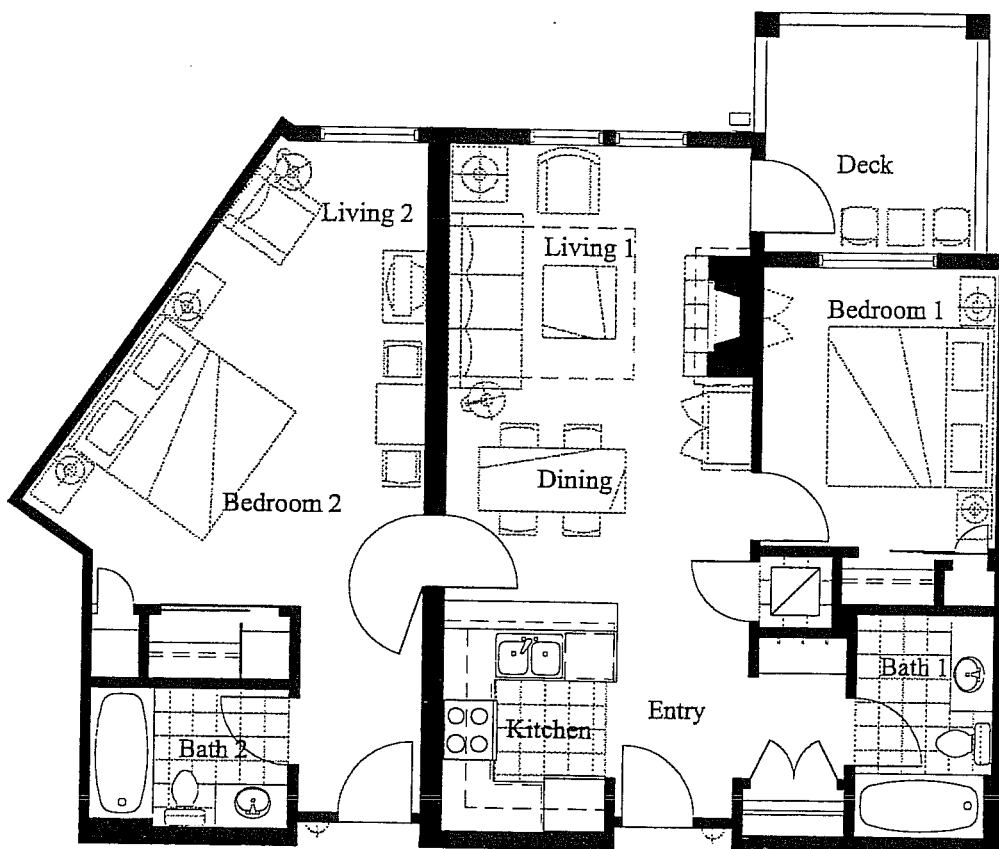
The Developer reserves the right to make any modifications that the Developer deems necessary. All dimensions and areas shown on these plans are approximate. "As Build" dimensions may vary from those shown. The linear dimensions shown indicate distances from interior wall to interior wall. The areas shown are based on standard architectural calculations which may vary from the method of surveyed calculations.



EAGLE SPRINGS

Unit: Unit E4
Square Feet: 1,060

Date: December 23, 1999



ROOM DIMENSIONS

Entry:	5'-0" x 9'-5"
Kitchen:	7'-0" x 10'-2"
Bath 2:	5'-4" x 9'-4"
Bedroom 2:	10'-0" x 14'-0"
Living 2:	10'-0" x 7'-0"
Living 1:	12'-8" x 10'-0"
Dining:	12'-8" x 8'-7"
Deck:	10'-4" x 9'-5"
Bedroom 1:	9'-11" x 11'-8"
Bath 1:	8'-4" x 5'-6"

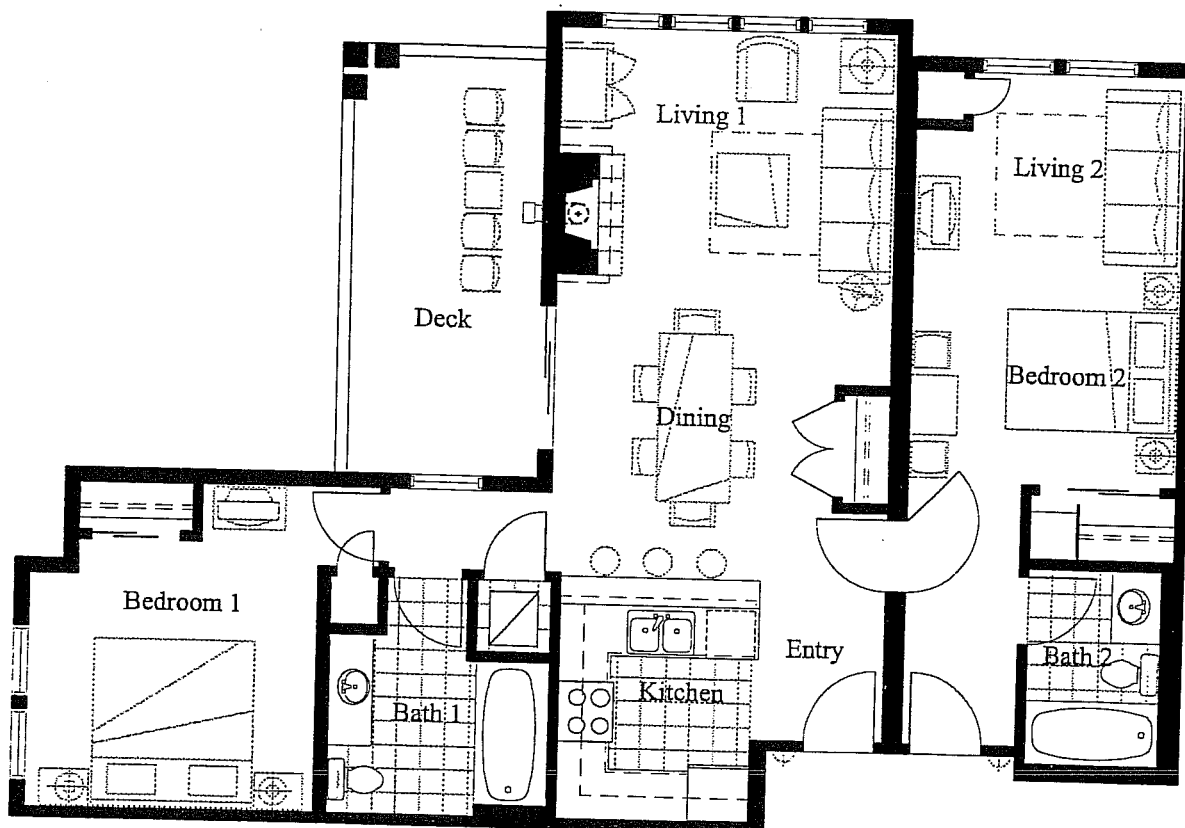
The Developer reserves the right to make any modifications that the Developer deems necessary. All dimensions and areas shown on these plans are approximate. "As Build" dimensions may vary from those shown. The linear dimensions shown indicate distances from interior wall to interior wall. The areas shown are based on standard architectural calculations which may vary from the method of surveyed calculations.



EAGLE SPRINGS

Unit: Unit E5
Square Feet: 1,155

Date: December 23, 1999



ROOM DIMENSIONS

Entry:	6'-8" x 5'-6"
Bath 1:	8'-11" x 9'-11"
Bedroom 1:	12'-0" x 13'-6"
Deck:	8'-5" x 17'-10"
Living 1:	14'-0" x 11'-5"
Dining:	8'-6" x 12'-7"
Kitchen:	8'-0" x 10'-2"
Living 2:	11'-2" x 7'-6"
Bedroom 2:	11'-2" x 9'-6"
Bath 2:	5'-6" x 8'-2"

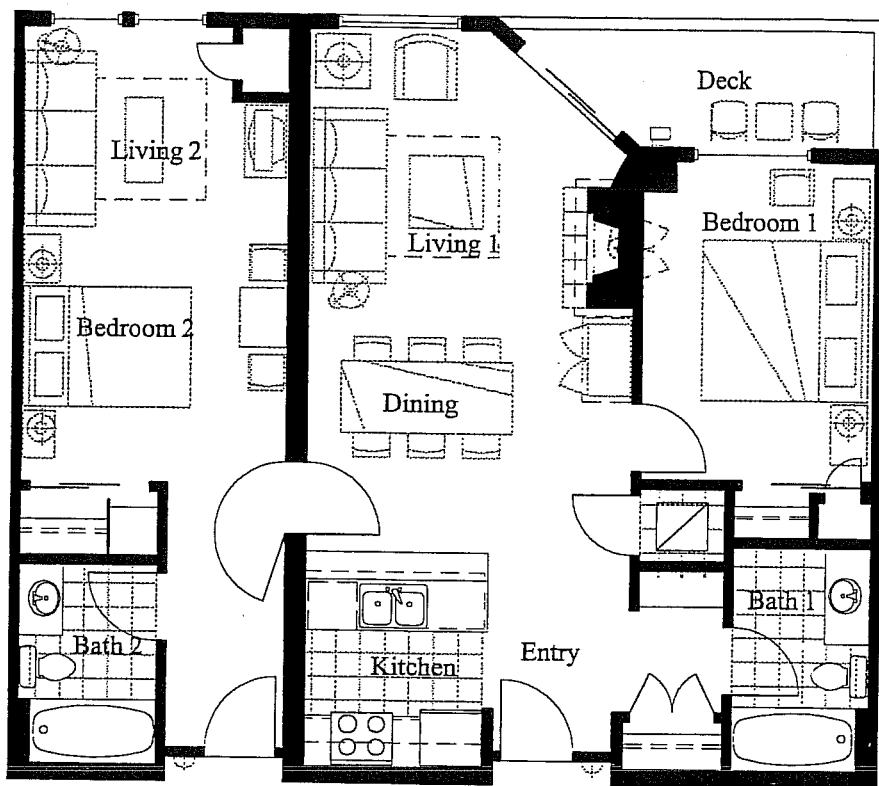
The Developer reserves the right to make any modifications that the Developer deems necessary. All dimensions and areas shown on these plans are approximate. "As Build" dimensions may vary from those shown. The linear dimensions shown indicate distances from interior wall to interior wall. The areas shown are based on standard architectural calculations which may vary from the method of surveyed calculations.



EAGLE SPRINGS

Unit: Unit E6
Square Feet: 1,086

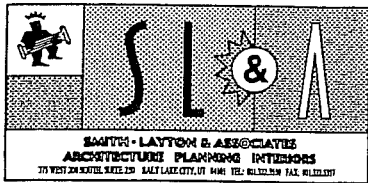
Date: December 23, 1999



ROOM DIMENSIONS

Entry	5'-4" x 8'-4"
Kitchen:	7'-5" x 9'-0"
Bath 2:	5'-3" x 8'-5"
Bedroom 2:	11'-2" x 9'-4"
Living 2:	11'-2" x 8'-6"
Living 1:	13'-6" x 11'-10"
Dining:	13'-6" x 9'-8"
Deck:	9'-11" x 4'-10"
Bedroom 1:	9'-10" x 13'-3"
Bath 1:	5'-3" x 9'-4"

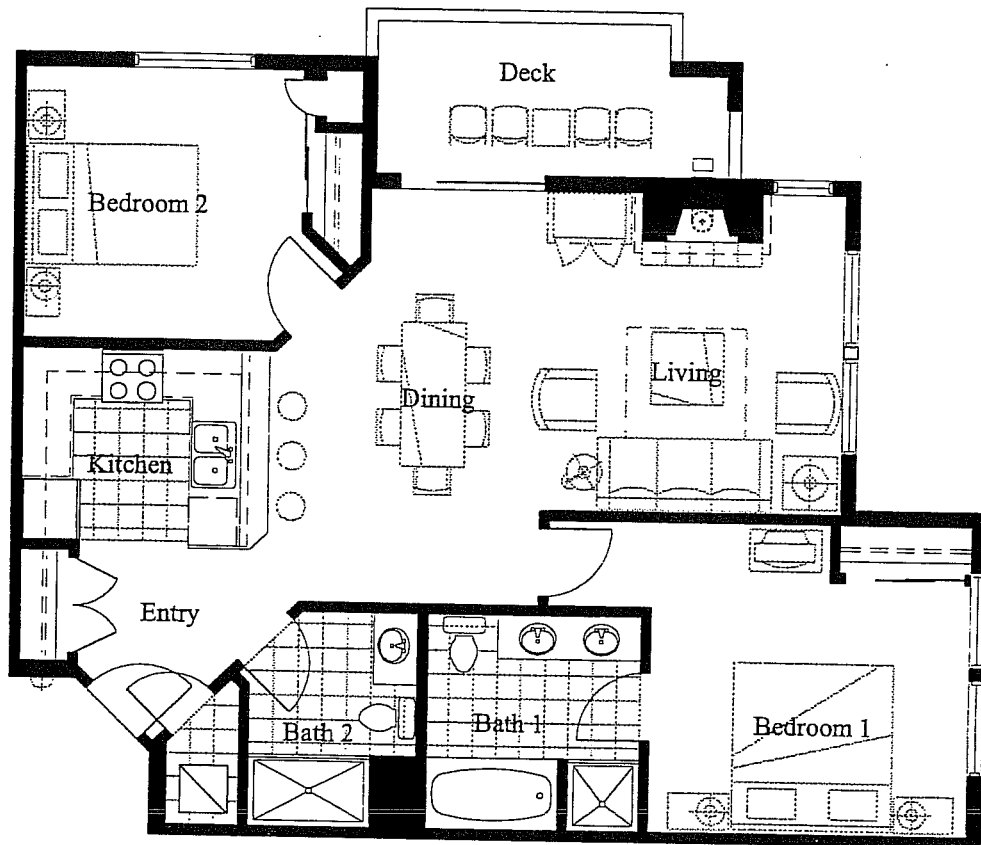
The Developer reserves the right to make any modifications that the Developer deems necessary. All dimensions and areas shown on these plans are approximate. "As Build" dimensions may vary from those shown. The linear dimensions shown indicate distances from interior wall to interior wall. The areas shown are based on standard architectural calculations which may vary from the method of surveyed calculations.



EAGLE SPRINGS

Unit: Unit F
Square Feet: 1,084

Date: December 23, 1999



ROOM DIMENSIONS

Entry	4'-5" x 6'-0"
Kitchen	9'-4" x 8'-0"
Bedroom 2	11'-5" x 11'-3"
Dining	12'-0" x 17'-3"
Deck	14'-7" x 6'-4"
Living	12'-6" x 13'-3"
Bedroom 1	13'-4" x 13'-0"
Bath 1	8'-11" x 9'-0"
Bath 2	6'-11" x 9'-0"

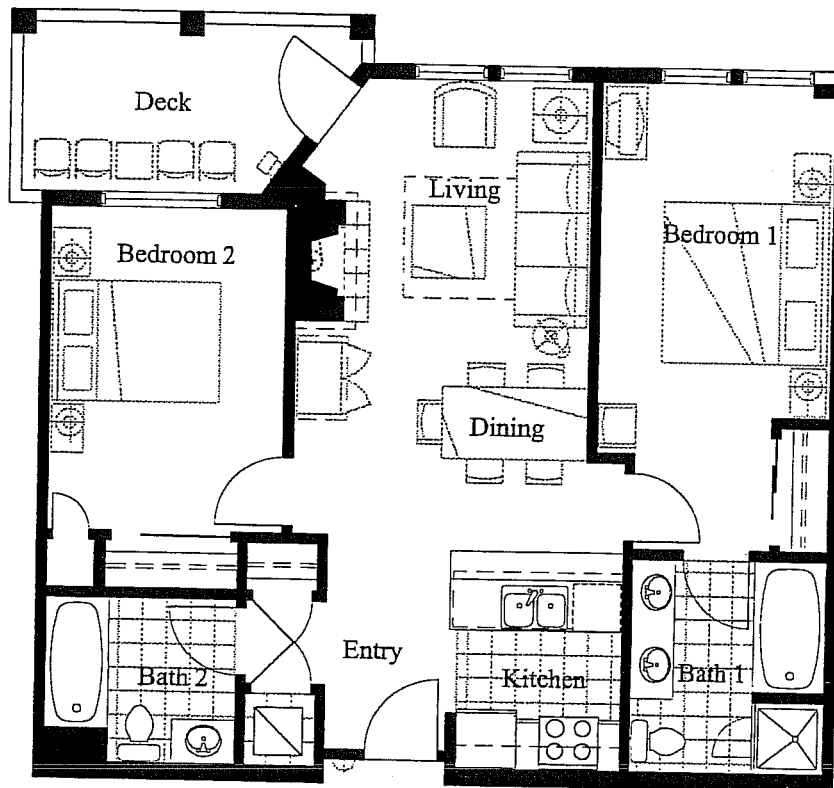
The Developer reserves the right to make any modifications that the Developer deems necessary. All dimensions and areas shown on these plans are approximate. "As Build" dimensions may vary from those shown. The linear dimensions shown indicate distances from interior wall to interior wall. The areas shown are based on standard architectural calculations which may vary from the method of surveyed calculations.



EAGLE SPRINGS

Unit: Unit F1
Square Feet: 938

Date: December 23, 1999



ROOM DIMENSIONS

Entry:	5'-0" x 7'-7"
Bath 1:	8'-0" x 6'-11"
Bedroom 1:	11'-4" x 13'-6"
Deck:	14'-1" x 7'-0"
Living:	10'-8" x 12'-0"
Dining:	10'-8" x 8'-4"
Bedroom 2:	9'-10" x 13'-5"
Bath 2:	8'-3" x 8'-11"
Kitchen:	6'-10" x 8'-3"

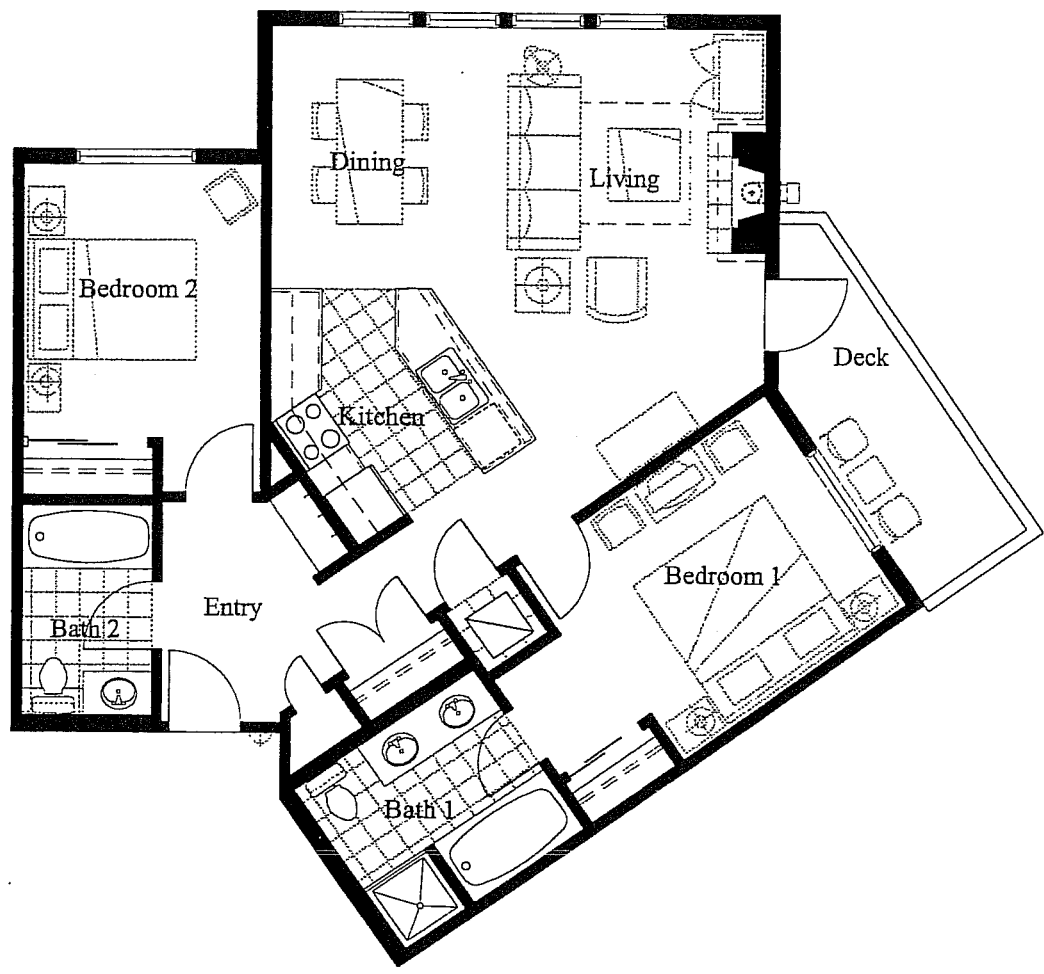
The Developer reserves the right to make any modifications that the Developer deems necessary. All dimensions and areas shown on these plans are approximate. "As Build" dimensions may vary from those shown. The linear dimensions shown indicate distances from interior wall to interior wall. The areas shown are based on standard architectural calculations which may vary from the method of surveyed calculations.



EAGLE SPRINGS

Unit: Unit F2
Square Feet: 1,031

Date: December 23, 1999



ROOM DIMENSIONS

Entry:	5'-0" x 9'-3"
Bath 2:	8'-11" x 8'-0"
Bedroom 2:	11'-5" x 10'-4"
Dining:	11'-0" x 6'-6"
Living:	13'-10" x 15'-2"
Kitchen:	8'-6" x 9'-7"
Deck:	5'-4" x 15'-5"
Bedroom 1:	10'-0" x 13'-7"
Bath 1:	5'-5" x 8'-10"

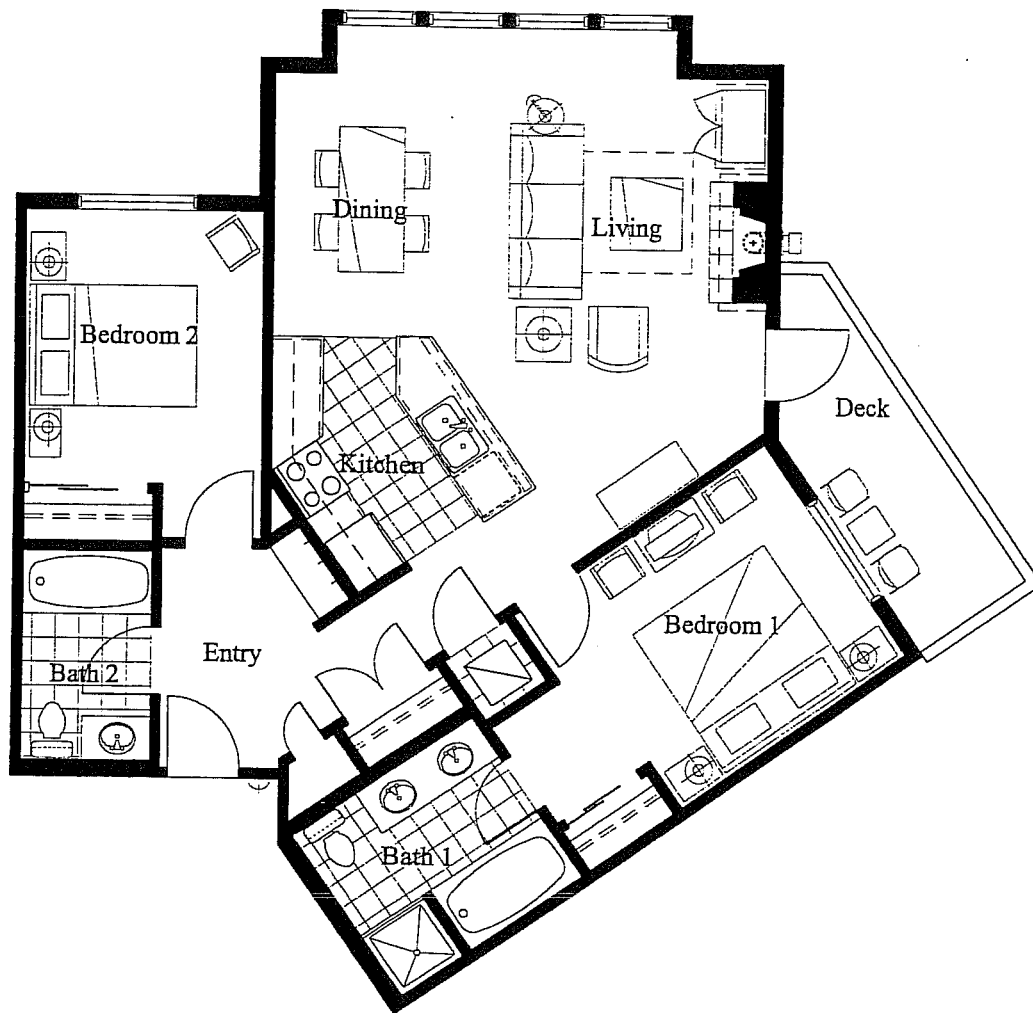
The Developer reserves the right to make any modifications that the Developer deems necessary. All dimensions and areas shown on these plans are approximate. "As Build" dimensions may vary from those shown. The linear dimensions shown indicate distances from interior wall to interior wall. The areas shown are based on standard architectural calculations which may vary from the method of surveyed calculations.



EAGLE SPRINGS

Unit: Unit F2a
Square Feet: 1,063

Date: January 18, 2000



ROOM DIMENSIONS

Entry:	5'-0" x 9'-3"
Bath 2:	8'-11" x 8'-0"
Bedroom 2:	11'-5" x 10'-4"
Dining:	13'-0" x 6'-6"
Living:	13'-10" x 17'-2"
Kitchen:	8'-6" x 9'-7"
Deck:	5'-4" x 15'-5"
Bedroom 1:	10'-0" x 13'-7"
Bath 1:	5'-5" x 8'-10"

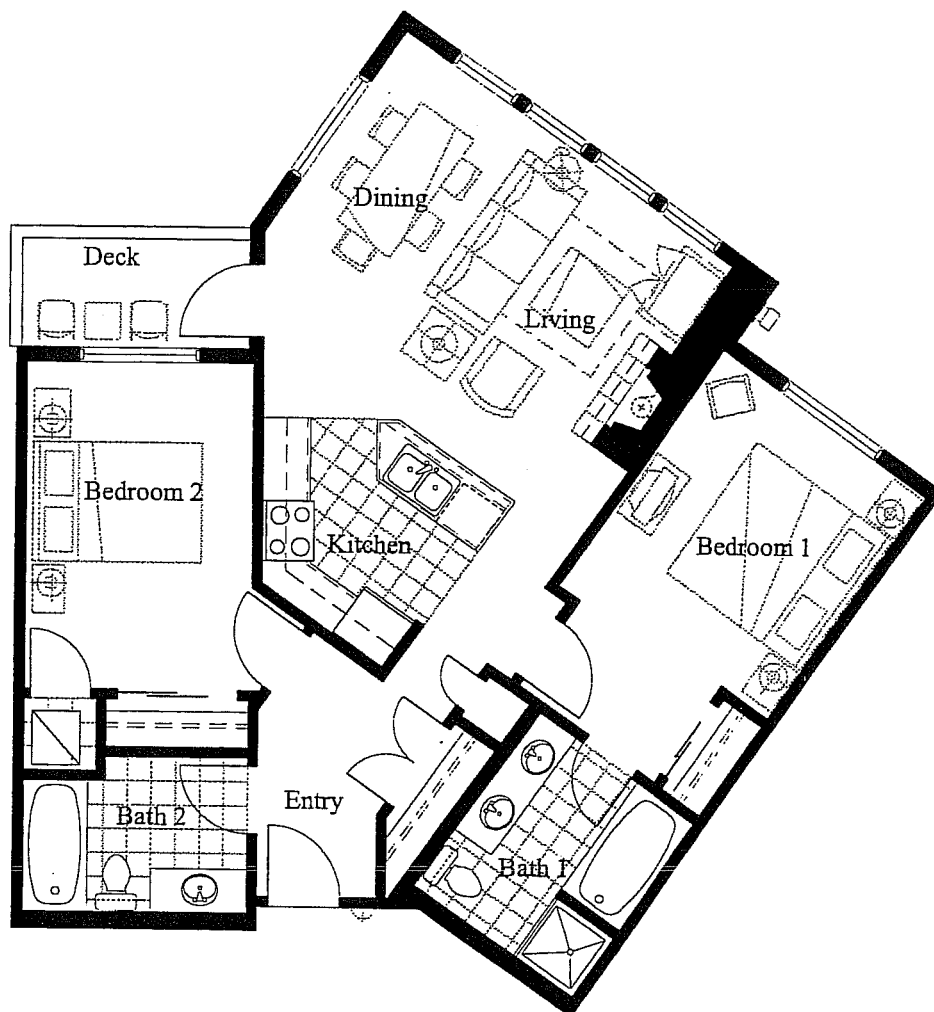
The Developer reserves the right to make any modifications that the Developer deems necessary. All dimensions and areas shown on these plans are approximate. "As Build" dimensions may vary from those shown. The linear dimensions shown indicate distances from interior wall to interior wall. The areas shown are based on standard architectural calculations which may vary from the method of surveyed calculations.



EAGLE SPRINGS

Unit: Unit F3
Square Feet: 991

Date: December 23, 1999



ROOM DIMENSIONS

Entry:	5'-0" x 7'-10"
Bath 2:	9'-6" x 6'-6"
Bedroom 2:	9'-6" x 14'-0"
Deck:	9'-6" x 5'-0"
Dining:	6'-10" x 11'-2"
Living:	14'-6" x 11'-2"
Kitchen:	7'-10" x 10'-6"
Bedroom 1:	10'-11" x 12'-0"
Bath 1:	8'-0" x 8'-11"

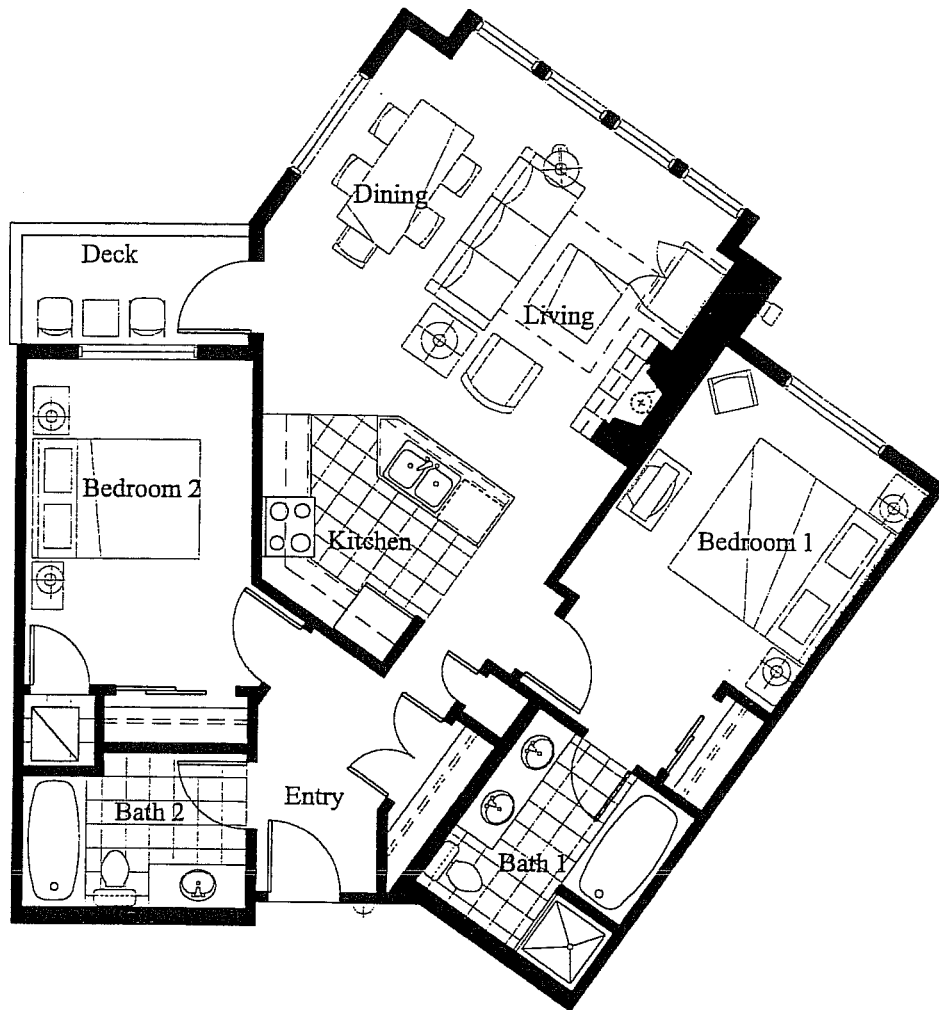
The Developer reserves the right to make any modifications that the Developer deems necessary. All dimensions and areas shown on these plans are approximate. "As Build" dimensions may vary from those shown. The linear dimensions shown indicate distances from interior wall to interior wall. The areas shown are based on standard architectural calculations which may vary from the method of surveyed calculations.



EAGLE SPRINGS

Unit: Unit F3a
Square Feet: 1,014

Date: January 18, 2000



ROOM DIMENSIONS

Entry:	5'-0" x 7'-10"
Bath 2:	9'-6" x 6'-6"
Bedroom 2:	9'-6" x 14'-0"
Deck:	9'-6" x 5'-0"
Dining:	6'-10" x 12'-8"
Living:	16'-0" x 11'-2"
Kitchen:	7'-10" x 10'-6"
Bedroom 1:	10'-11" x 12'-0"
Bath 1:	8'-0" x 8'-11"

The Developer reserves the right to make any modifications that the Developer deems necessary. All dimensions and areas shown on these plans are approximate. "As Build" dimensions may vary from those shown. The linear dimensions shown indicate distances from interior wall to interior wall. The areas shown are based on standard architectural calculations which may vary from the method of surveyed calculations.

EAGLE SPRINGS

Unit: Unit F4
Square Feet: 1,073

Date: December 23, 1999



ROOM DIMENSIONS

Entry:	4'-9" x 8'-7"
Bath 2:	9'-10" x 6'-0"
Bedroom 2:	9'-10" x 15'-11"
Deck:	10'-0" x 6'-6"
Living:	12'-10" x 16'-0"
Dining:	8'-7" x 12'-7"
Kitchen:	6'-8" x 7'-8"
Bedroom 1:	10'-3" x 15'-11"
Bath 1:	8'-0" x 8'-5"

The Developer reserves the right to make any modifications that the Developer deems necessary. All dimensions and areas shown on these plans are approximate. "As Build" dimensions may vary from those shown. The linear dimensions shown indicate distances from interior wall to interior wall. The areas shown are based on standard architectural calculations which may vary from the method of surveyed calculations.

EAGLE SPRINGS

Unit: Unit F5
 Square Feet: 1,094

Date: December 23, 1999



ROOM DIMENSIONS

Entry:	4'-9" x 11'-5"
Bath 2:	9'-10" x 6'-0"
Bedroom 2:	9'-10" x 17'-11"
Deck:	8'-0" x 5'-6"
Living:	12'-8" x 14'-2"
Dining:	8'-7" x 12'-7"
Kitchen:	6'-8" x 7'-8"
Bedroom 1:	10'-3" x 15'-11"
Bath 1:	9'-8" x 8'-5"

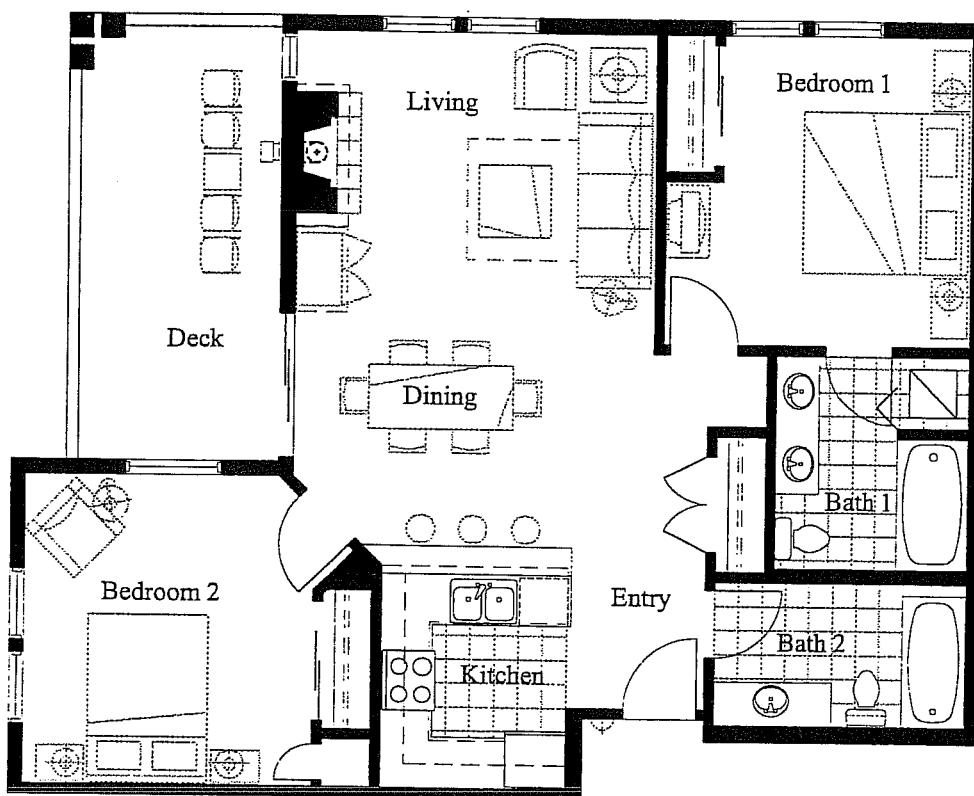
The Developer reserves the right to make any modifications that the Developer deems necessary. All dimensions and areas shown on these plans are approximate. "As Build" dimensions may vary from those shown. The linear dimensions shown indicate distances from interior wall to interior wall. The areas shown are based on standard architectural calculations which may vary from the method of surveyed calculations.



EAGLE SPRINGS

Unit: Unit F6
Square Feet: 1,056

Date: December 23, 1999



ROOM DIMENSIONS

Entry:	5'-8" x 5'-10"
Kitchen:	7'-9" x 9'-4"
Bedroom 2:	12'-0" x 12'-11"
Deck:	8'-4" x 18'-0"
Living:	12'-4" x 11'-4"
Dining:	16'-2" x 10'-10"
Bedroom 1:	15'-5" x 12'-10"
Bath 1:	8'-2" x 8'-11"
Bath 2:	10'-8" x 6'-0"

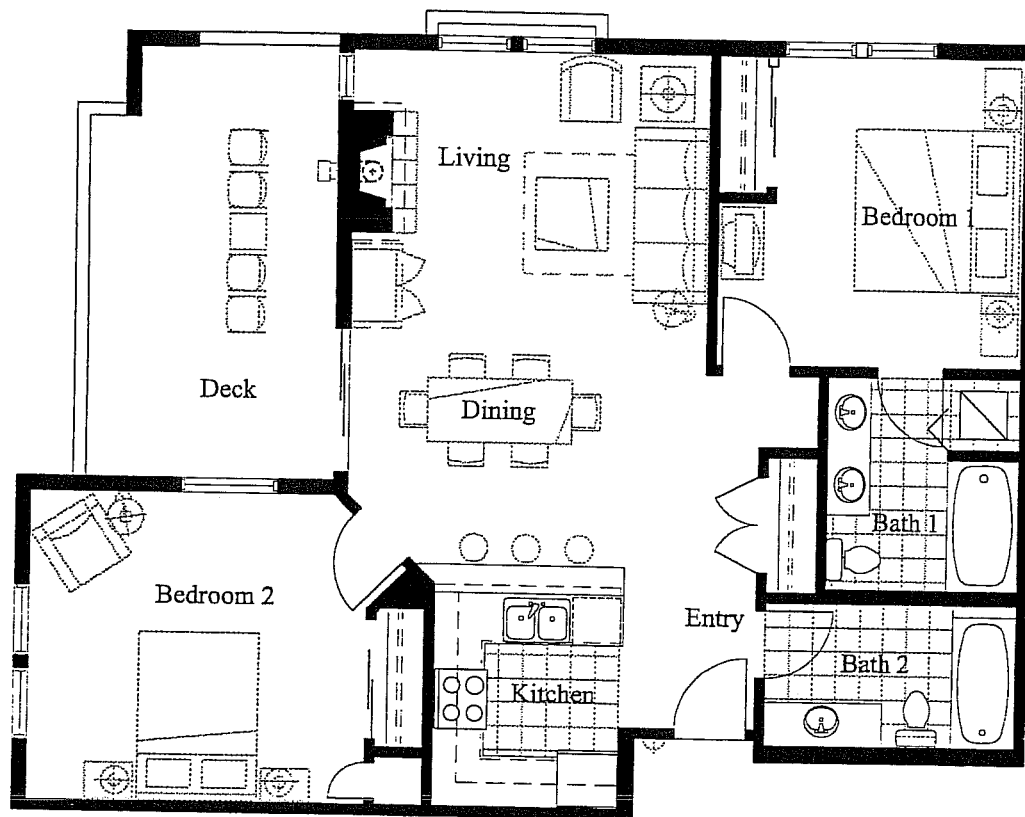
The Developer reserves the right to make any modifications that the Developer deems necessary. All dimensions and areas shown on these plans are approximate. "As Build" dimensions may vary from those shown. The linear dimensions shown indicate distances from interior wall to interior wall. The areas shown are based on standard architectural calculations which may vary from the method of surveyed calculations.



EAGLE SPRINGS

Unit: Unit F7 (4th Floor, West Bldg. only)
Square Feet: 1056

Date: December 23, 1999



ROOM DIMENSIONS

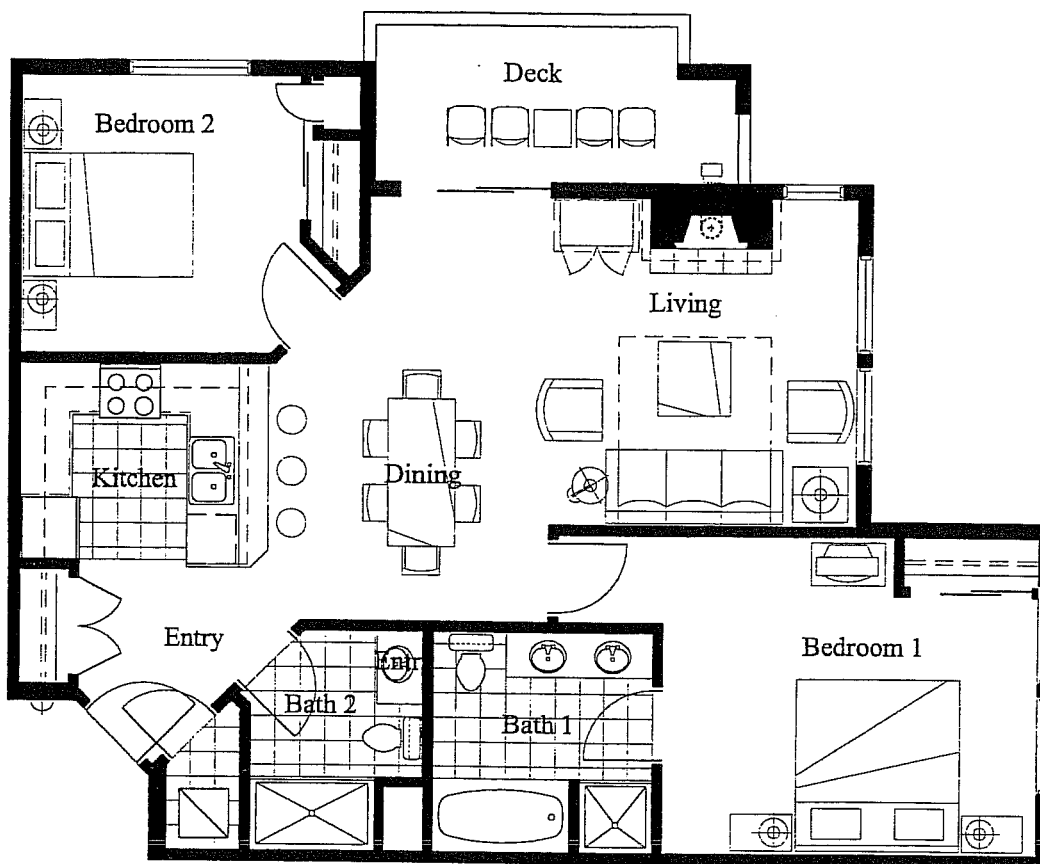
Entry:	5'-8" x 5'-11"
Kitchen:	7'-9" x 9'-4"
Bedroom 2:	14'-0" x 13'-0"
Deck:	10'-4" x 18'-0"
Living:	12'-4" x 13'-3"
Dining:	12'-4" x 8'-11"
Bedroom 1:	15'-6" x 12'-10"
Bath 1:	8'-3" x 8'-11"
Bath 2:	10'-8" x 6'-0"

The Developer reserves the right to make any modifications that the Developer deems necessary. All dimensions and areas shown on these plans are approximate. "As Build" dimensions may vary from those shown. The linear dimensions shown indicate distances from interior wall to interior wall. The areas shown are based on standard architectural calculations which may vary from the method of surveyed calculations.

EAGLE SPRINGS

Unit: Unit F8
 Square Feet: 1,112

Date: January 18, 2000



ROOM DIMENSIONS

Entry:	6'-0" x 8'-2"
Bath 2:	6'-11" x 9'-0"
Bedroom 2:	13'-8" x 11'-2"
Deck:	14'-6" x 6'-4"
Living:	13'-5" x 13'-3"
Dining:	10'-0" x 8'-3"
Kitchen:	12'-0" x 8'-4"
Bedroom 1:	15'-4" x 12'-11"
Bath 1:	8'-11" x 9'-0"

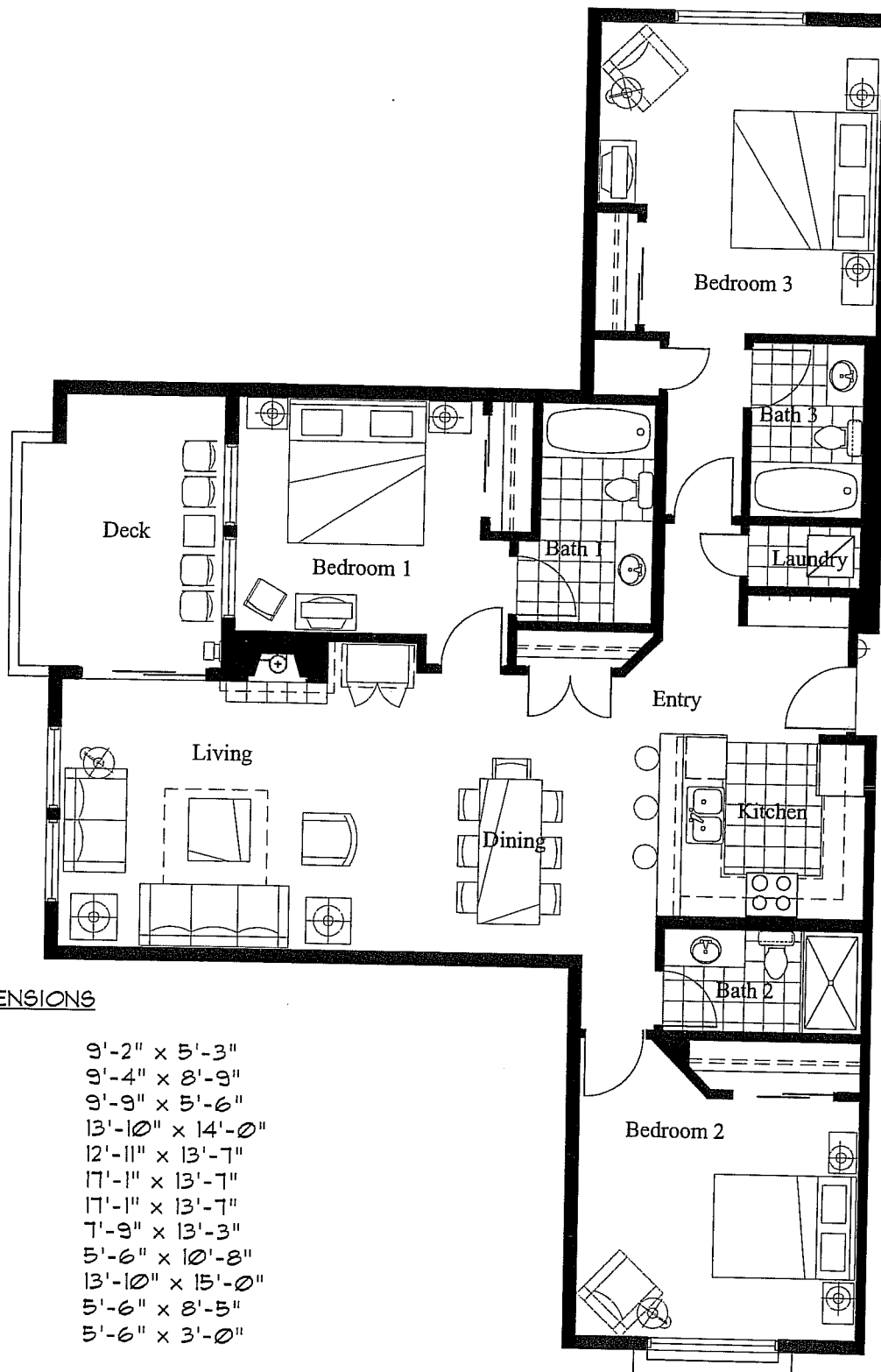
The Developer reserves the right to make any modifications that the Developer deems necessary. All dimensions and areas shown on these plans are approximate. "As Build" dimensions may vary from those shown. The linear dimensions shown indicate distances from interior wall to interior wall. The areas shown are based on standard architectural calculations which may vary from the method of surveyed calculations.



EAGLE SPRINGS

Unit: Unit G2
Square Feet: 1,558

Date: December 23, 1999



ROOM DIMENSIONS

Entry:	9'-2" x 5'-3"
Kitchen:	9'-4" x 8'-9"
Bath 2:	9'-9" x 5'-6"
Bedroom 2:	13'-10" x 14'-0"
Dining:	12'-11" x 13'-7"
Living:	17'-1" x 13'-7"
Deck:	17'-1" x 13'-7"
Bedroom 1:	7'-9" x 13'-3"
Bath 1:	5'-6" x 10'-8"
Bedroom 3:	13'-10" x 15'-0"
Bath 3:	5'-6" x 8'-5"
Laundry:	5'-6" x 3'-0"

The Developer reserves the right to make any modifications that the Developer deems necessary. All dimensions and areas shown on these plans are approximate. "As Build" dimensions may vary from those shown. The linear dimensions shown indicate distances from interior wall to interior wall. The areas shown are based on standard architectural calculations which may vary from the method of surveyed calculations.